

Go EFI
Classic

Go EFI 8
Power
Adder **Plus**

GO **PARK**

Retro
LS

ULTIMATE
LS

Go
STREET

GO-FUEL

Go EFI
2-Barrel

NEW
STREET

FiTech
REBEL
LS

GO PORT

TPI
Tune Port Injection

TP
Tune Port Inje

Go EFI
2x4

NEW
STREET

GO FUEL

NEW
STREET

Go EFI 4
Power
Adder

Go EFI
Classic

Go EFI 8
Power
Adder **Plus**

TPI
Tune Port Injection

Tri-Power

MORE

FiTech
REBEL
LS

Go EFI
2x4

GO **PARK**

Go
STREET

GO PORT

Go EFI
2-Barrel

GO-SHIFT

GO-FUEL

Go EFI 4
Power
Adder

Retro
LS

Go
STREET

Tri-Power

Go EFI 8
Power
Adder **Plus**

FiTech
REBEL
LS

TPI
Tune Port Injection

GO **PARK**

GO PORT

GO-SHIFT

Go EFI
2-Barrel

Retro
LS

Go EFI
2x4

GO-FUEL

FITECHEFI.COM
PRODUCT CATALOG



Welcome to FiTech Fuel Injection

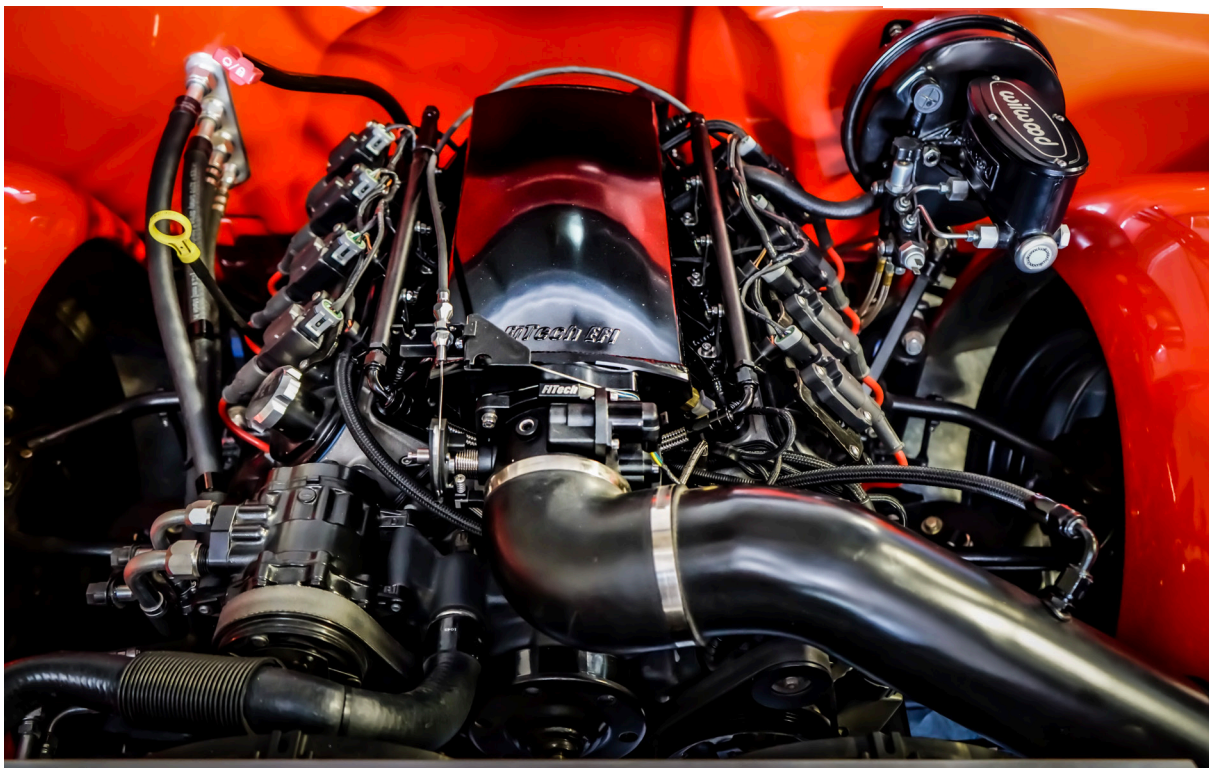
FiTech was launched with the goal of producing high quality electronic fuel injection technology for hot rod enthusiasts but in an affordable and easy-to-install system. Our first Go EFI Throttle Body systems delivered outstanding value and performance with OEM level functionality and improved driveability.

All of our products are engineered to deliver performance and value while being easy to install and use. Every system is designed and developed in Riverside, California using OEM level engineering resources, and components. Our software includes OBDII diagnostic readouts and limp home modes, just like factory ECU's. We believe our software and design is the best available and have the confidence to back it up with an industry leading 3-Year Limited Warranty! That's right - 36 months! Our EFI Systems are built to perform for the long haul to give you the most smiles per mile available!

If you have any questions about which EFI system is best for your application, our team is only a call or email away.



Follow for More Info



FiTech
Fuel Injection



USA 951-340-2624
CANADA 877-521-7787



sales@fitechefi.com



www.fitechefi.com

Contents & Contacts

Catalog V5.0

Overview, TBI EFI and Master Kits	4-5
Throttle Body Kits	6-12
Ultra Ram, TPI and Port EFI Kits	13-15
LS EFI Systems	16-20
Air Cleaners	21
LS and CDI Coils	22
Capacitive Discharge Ignitions (CDI).	23
Force Fuel Systems.	24-25
Pump Modules and Tanks	26-27
Fuel Accessories	28-30
Transmission Controls	31
Total Package EFI Kits	32-35
Master Kits.	36-49
Resources and Tech Support.	50-51

CUSTOMER SUPPORT

We want to provide the best service possible. If you have any questions or comments, feel free to e-mail or call using any of the information below.

FiTech Fuel Injection

12370 Doherty St. Suite A

Riverside, CA 92503

Phone – 951-340-2624 – *Hablamos español!*

www.fitechefi.com

Sales Email – sales@fitechefi.com

Tech Email – techmail@fitechefi.com

For help with orders please send email to: orders@fitechefi.com

Follow us!



@FiTechEFIMedia



@FiTech_EFI



@FITECHEFI



THROTTLE BODY EFI Systems

With FiTech TBI EFI systems, not only do you get the very latest in EFI technology, but you get the most affordable full featured systems available. You can pay more, but you won't get anything better than FiTech. We offer several different systems to fit the needs and budgets of hot rod enthusiasts. Below are just some of the features you'll see with our different Throttle Body EFI systems.



PN 30004



PN 30003



- The fastest, most accurate self-learning technology available
- Wet flow annular discharge for superior fuel atomization
- Both 4-injector and 8-injector systems offered
- Power Adder versions support supercharging, turbocharging or nitrous
- Multi-bolt pattern mounts to most intakes
- Reliable Wide-Band Oxygen sensor
- Polished stainless steel linkage
- Fan control (up to two fans on Power Adder units)



FiTech EFI At A Glance						
FEATURES	Go-Street EFI	Easy Street EFI	Mean Street EFI	Go EFI 4	Go EFI 4 PA	Go EFI 8 PA
Horsepower	100-400HP	200-600HP	200-800HP	200-600HP	200-600HP	250-1200HP
Injectors	4-62 lbs.	4-80 lbs.	8-62 lbs.	4-80 lbs.	4-80 lbs.	8-80 lbs.
Self Learning	Yes	Yes	Yes	Yes	Yes	Yes
Integrated ECU	Yes	Yes	Yes	Yes	Yes	Yes
Timing Control	No	No	No	Yes	Yes	Yes
Fan Control	1 Fan	1 Fan	1 Fan	1 Fan	2 Fans	2 Fans
Boost Compatible	No	No	No	No	21.7 PSI	21.7 PSI
Nitrous Control	No	No	AFR Correction	No	Full Control	Full Control
Hand-held Monitor	Color Touch Screen	Color Touch Screen	Color Touch Screen	Color Touch Screen	Color Touch Screen	Color Touch Screen
Laptop Connection	No	No	No	No	Yes	Yes

MANY MORE FEATURES AND SYSTEMS AVAILABLE!

4



WARNING: Cancer or Reproductive Harm
www.P65warnings.ca.gov

Emission Controlled Vehicle Information: Not legal for use on Emissions Controlled Vehicles.
Check with your local DMV, emissions testing facility or applicable State laws before installing.

FiTech
Fuel Injection



USA 951-340-2624
CANADA 877-521-7787



sales@fitechefi.com



www.fitechefi.com

MASTER KITS

To make your EFI swap seamless, you can order your EFI Kit with several fuel delivery solutions. That means one part number gets you everything you need to convert your carbureted vehicle to EFI! We offer Inline Pump Kits, three different Force Fuel Systems, In-Tank Pump Modules along with a number of new tanks designed for fuel injection. You can even get them with a powerful CDI ignition! Go to pages 36-49 or check out **FiTechEFI.com** for a full listing of our Master Kits.



Inline Pump Kit

Everything you need to install a high pressure pump on the frame rail, including 40 feet of hose, a pre and post filter, fittings and clamps. See page 36.



Force Fuel Systems

We offer multiple Force Fuel kits that allow you to keep the stock pump to feed the Force Fuel reservoir while its internal pump provides high pressure to the EFI system. See pages 24-25.



In-Tank Modules

These universal kits allow you to modify your stock tank or fuel cell to accept a high pressure fuel pump. We offer return and returnless modules to provide high fuel pressure for your EFI system. See page 26.



Complete Tanks

We now offer bolt-in tanks for many popular muscle cars and classic trucks including Camaros, Mustangs, Chevelles and more. The Tanks are baffled and designed to accept a high pressure pump for a great fit and finish. See page 27.



FiTech EFI systems are compatible with E85, Ethanol, Methanol and Alcohol based fluids. It is important to note that E85 requires 30% more fuel to equal the same power level so you need to confirm that your EFI system is capable of flowing the extra E85 to reach your horsepower goals. (For example: 1,000HP Gas x 70% = 700HP E85)



WARNING: Cancer or Reproductive Harm
www.P65warnings.ca.gov

Emission Controlled Vehicle Information: Not legal for use on Emissions Controlled Vehicles. Check with your local DMV, emissions testing facility or applicable State laws before installing.

5



USA 951-340-2624
CANADA 877-521-7787



sales@fitechefi.com



www.fitechefi.com

FiTech
Fuel Injection

GO STREET EFI 400HP System

The Go Street EFI is a ready-to-run system that sticks to the basic functions necessary to get the best performance and economy out of your street and mild performance engine. This throttle body system is economically priced and delivers the benefits of quick starts, smooth idle and self-learning technology to get you from sea level to over the mountains without a hitch. The system easily installs with most ignition systems and fits most intake patterns to replace your old carb.

Go Street, 400HP, PN 30003

Supplied with: Handheld controller, cable and windshield mount, throttle body vehicle side harness, WBO2 sensor, bung kit, coolant sensor, gasket, mini USB cable, instructions and warranty info.



STREET
SERIES



System	Horsepower	Integrated ECU	Timing Control	Boost Compatible	Nitrous Compatible	Laptop Software	Injectors	Built-in Regulator	MAP Sensor	Fan Control	AC Input	E85
30003	100-400	Yes	No	No	No	No	4	Yes	1-Bar	1	Yes	Yes
30005	200-600	Yes	No	No	No	No	4	Yes	1-Bar	1	Yes	Yes

Note: Both systems require a high pressure fuel delivery system over 43 psi for proper operation.

EASY STREET 600HP System

With a classic gold finish, this Go Street system may have the looks of a factory carb, but the similarities end there. The pre-programmed assembly bolts right in place on a square-bore intake manifold and requires only a handful of inputs to fire up. The Easy Street accepts the tach signal from the coil negative, an HEI distributor or from a CD ignition box for simple installation. A fast reacting wide-band O2 sensor is supplied to monitor the fuel burn signaling to the self-learning technology of the ECU on adjustments to the mixture resulting in smooth performance from idle to high rpm.

Go Street, 600HP, PN 30005

Supplied with: Handheld controller, cable and windshield mount, throttle body vehicle side harness, WBO2 sensor, bung kit, coolant sensor, gasket, mini USB cable, instructions and warranty info.



MASTER KITS

Looking for an inclusive EFI Kit and fuel delivery solution? See pages 36-49 or check out www.fitechefi.com for a Master Kit that includes the EFI system along with an Inline Fuel Pump Kit, Force Fuel Kit, Tank Module or even a new Tank with an Internal Pump!

6



WARNING: Cancer or Reproductive Harm
www.P65warnings.ca.gov

Emission Controlled Vehicle Information: Not legal for use on Emissions Controlled Vehicles. Check with your local DMV, emissions testing facility or applicable State laws before installing.

FiTech
Fuel Injection



USA 951-340-2624
CANADA 877-521-7787



sales@fitechefi.com



www.fitechefi.com

MEANSTREET 800HP System



E85



Find more EFI Systems here!

Never has so much power been placed in one compact package! The Meanstreet is a nitrous compatible system with eight injectors, an onboard ECU, MAP sensor and internal fuel pressure regulator to deliver a simple, clean installation.

Our Meanstreet's annular swirl, wet flow technology provides the most complete fuel atomization available. Using FiTech's proprietary self-tuning technology, combined with the supplied handheld monitor, you'll have your high powered engine tuned and ready for the street or track. The matte black throttle body bolts to any 4-barrel intake and wiring is kept at an absolute minimum thanks to the built-in ECU.



The supplied color touchscreen is easy to view and navigate through many calibrations and settings.

Meanstreet EFI, 800HP, PN 30008

Note: When the nitrous is activated, the Meanstreet switches to a customer programmed AFR target.

Supplied with: Handheld controller, cable and windshield mount, throttle body vehicle side harness, WBO2 sensor, bung kit, coolant sensor, gasket, mini USB cable, instructions and warranty info.

MASTER KITS

Looking for an inclusive EFI Kit and fuel delivery solution? See pages 36-49 or check out www.fitechefi.com for a Master Kit that includes the EFI system along with an Inline Fuel Pump Kit, Force Fuel Kit, Tank Module or even a new Tank with an Internal Pump!

System	Horsepower	Integrated ECU	Timing Control	Boost Compatible	Nitrous Compatible	Laptop Software	Injectors	Built-in Regulator	MAP Sensor	Fan Control	AC Input	E85
30008	200-800	Yes	No	No	Yes (afr target)	No	8	Yes	1-Bar	1	Yes	Yes

WARNING: Cancer or Reproductive Harm
www.P65warnings.ca.gov

Emission Controlled Vehicle Information: Not legal for use on Emissions Controlled Vehicles. Check with your local DMV, emissions testing facility or applicable State laws before installing.

7



USA 951-340-2624
CANADA 877-521-7787



sales@fitechefi.com



www.fitechefi.com

FiTech
Fuel Injection

GO EFI 4 600HP System

GO EFI
SERIES



**Find more EFI
Systems here!**

E85



PN 30001



PN 30002

MASTER KITS

Looking for an inclusive EFI Kit and fuel delivery solution? See pages 36-49 or check out www.fitechefi.com for a Master Kit that includes the EFI system along with an Inline Fuel Pump Kit, Force Fuel Kit, Tank Module or even a new Tank with an Internal Pump!



PN 35201

The Go EFI 4 self-tuning fuel injection system is ideal for everyday drivers to weekend cruisers or even bracket cars making up to 600hp. The throttle body, available in bright aluminum or matte black, easily fits any 4-bbl intake manifold. Thanks to the built-in ECU, MAP sensor and fuel pressure regulator, wiring and fueling is kept to just a few connections for an easy install.

The quick self-learning technology that FiTech is known for, combined with our wet annular discharge design will get your engine fired up and idling smooth in minutes. All it takes are a few taps of the supplied touchscreen controller which can be left plugged in to use as gauges, or removed and stored in the glovebox.

Go EFI 4, 600HP, Bright Aluminum, PN 30001

Go EFI 4, 600HP, Matte Black, PN 30002

Supplied with: Handheld controller, cable and windshield mount, throttle body vehicle side harness, WBO2 sensor, bung kit, coolant sensor, gasket, mini USB cable, instructions and warranty info.

System	Horsepower	Integrated ECU	Timing Control	Boost Compatible	Nitrous Compatible	Laptop Software	Injectors	Built-in Regulator	MAP Sensor	Fan Control	AC Input	E85
30001/2	200-600	Yes	Yes	No	No	No	4	Yes	1-Bar	1	No	Yes

8



WARNING: Cancer or Reproductive Harm
www.P65warnings.ca.gov

Emission Controlled Vehicle Information: Not legal for use on Emissions Controlled Vehicles. Check with your local DMV, emissions testing facility or applicable State laws before installing.

FiTech
Fuel Injection



USA 951-340-2624
CANADA 877-521-7787



sales@fitechefi.com



www.fitechefi.com

GO EFI 4 600HP Power Adder

The Go EFI 4 Power Adder 600hp kit is just the ticket to replace a blow-through carb or looks right at home atop a roots style blower! This system is capable of supporting up to 21.7 psi of boost right out of the box as well as a single stage of wet nitrous.

The air/fuel ratio is monitored and adjusted with FiTech's fast reacting self-learning technology, plus the ignition timing can be controlled based on boost or nitrous (including a retard feature). Most of the settings can be controlled through the touch-screen controller, but this system also comes with Pro-Tuning software to run on a laptop for even more specific mapping and tuning.



E85



Go EFI 4 Power Adder, Black, 600HP, PN 30004

Go EFI 4 Power Adder, Bright Aluminum, 600HP, PN 30006 *NEW!*

Supplied with: Handheld controller, cable and windshield mount, throttle body vehicle side harness, WBO2 sensor, bung kit, coolant sensor, gasket, mini USB cable, Pro-tuning laptop software, instructions and warranty info.

System	Horsepower	Integrated ECU	Timing Control	Boost Compatible	Nitrous Compatible	Laptop Software	Injectors	Built-in Regulator	MAP Sensor	Fan Control	AC Input	E85
30004/6	200-600	Yes	Yes	Yes	Yes	Yes	4	Yes	2.5-Bar	2	Yes	Yes
30012	250-1200	Yes	Yes	Yes	Yes	Yes	8	Yes	2.5 Bar	2	Yes	Yes

GO EFI 8 1200HP Power Adder

NEW!

PN 30013



If things are getting really serious under your hood in regard to four digit horsepower with boost or nitrous, the Go EFI 8 1200hp Power Adder system is up to the task! This bolt-on throttle body features eight high-flow injectors capable of fueling up to 1200hp!

This system is made to support serious horsepower and is supplied with our pro-tuning software and features the ability to data-log information! To ensure the best atomization of the fuel, the annular discharge design is increased to 20 jet streams to support the fuel volume required under boost. This system features a built-in 2.5 BAR MAP sensor to handle the increased boost pressures and also has built-in timing controls based on boost or a nitrous input.

Go EFI 8 Power Adder, 1200HP

Black, PN 30012

Bright Aluminum, PN 30013

E85

MASTER KITS

Looking for an inclusive EFI Kit and fuel delivery solution? See pages 36-49 or check out www.fitechefi.com for a Master Kit that includes the EFI system along with an Inline Fuel Pump Kit, Force Fuel Kit, Tank Module or even a new Tank with an Internal Pump!

Supplied with: Handheld controller, cable and windshield mount, throttle body vehicle side harness, WBO2 sensor, bung kit, coolant sensor, gasket, mini USB cable, Pro-tuning laptop software, instructions and warranty info.

WARNING: Cancer or Reproductive Harm
www.P65warnings.ca.gov

Emission Controlled Vehicle Information: Not legal for use on Emissions Controlled Vehicles. Check with your local DMV, emissions testing facility or applicable State laws before installing.

9



USA 951-340-2624
CANADA 877-521-7787



sales@fitechefi.com

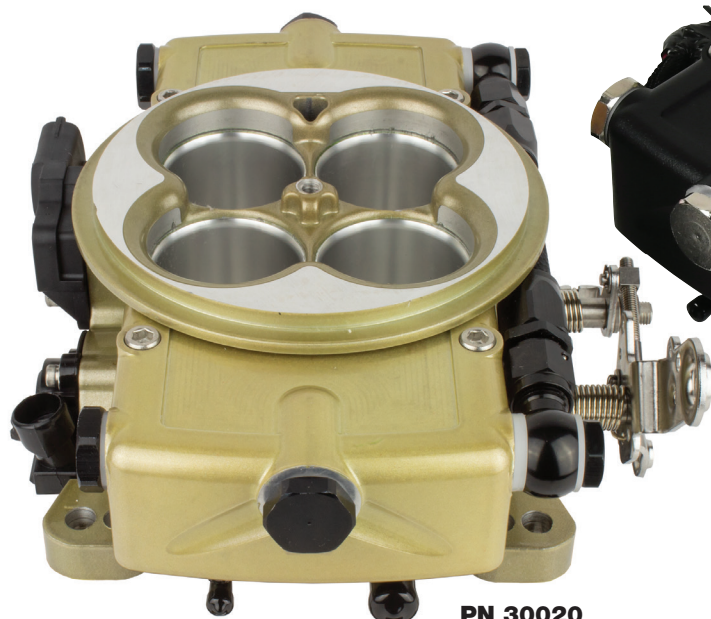


www.fitechefi.com

FiTech
Fuel Injection

GO EFI CLASSIC

GO EFI
SERIES



PN 30020



PN 30021



If you prefer the restored or classic hot rod look, the Go EFI Classic is for you. You get the performance benefits of modern fuel injection, with the looks of a vintage carburetor (without the issues of flooding, vapor lock and cold start troubles).

The Go EFI Classic features our advanced self-tuning fuel metering technology and will support engines rated up to 650hp. Thanks to the dual bolt pattern, the throttle body will easily bolt onto most intake manifolds and throttle linkages. The ECU of the Classic series is compact and easy to mount out of sight to maintain a restored engine compartment but you'll notice the fuel injection benefits every time you turn the key!

Go EFI Classic, Gold, 650HP, PN 30020

Go EFI Classic, Black, 650HP, PN 30021

Supplied with: Remote ECU, handheld controller, cable and windshield mount, wiring harness, WBO2 sensor, bung kit, coolant sensor, gasket, mini USB cable, instructions and warranty info.

Note: A fuel pressure regulator is required unless using a regulated fuel delivery system. See pages 24-28 for fuel delivery options. Both systems require a high pressure fuel system to deliver over 43 psi.

System	Horsepower	Integrated ECU	Timing Control	Boost Compatible	Nitrous Compatible	Laptop Software	Injectors	Built-in Regulator	MAP Sensor	Fan Control	AC Input	E85
30020	200-650	No	No	No	No	No	4	No	1-Bar	1	Yes	Yes
30021	200-650	No	No	No	No	No	4	No	1-Bar	1	Yes	Yes

MASTER KITS

Looking for an inclusive EFI Kit and fuel delivery solution? See pages 36-49 or check out www.fitechefi.com for a Master Kit that includes the EFI system along with an Inline Fuel Pump Kit, Force Fuel Kit, Tank Module or even a new Tank with an Internal Pump!

10 **WARNING:** Cancer or Reproductive Harm
www.P65warnings.ca.gov

Emission Controlled Vehicle Information: Not legal for use on Emissions Controlled Vehicles.
Check with your local DMV, emissions testing facility or applicable State laws before installing.

FiTech
Fuel Injection



USA 951-340-2624
CANADA 877-521-7787



sales@fitechefi.com



www.fitechefi.com

GO EFI 2 BARREL 400HP



There is a group of enthusiasts out there looking to update their 2-barrel fed cruisers with the driveability benefits of electronic fuel injection. The Go EFI 2 Barrel EFI system bolts to common H-2300 and R2G manifolds (with a TD-P#2086 adapter). The ECU is incorporated into the throttle body producing a simple installation with only a few wires to connect (fuel pump, ignition, power, and tach).



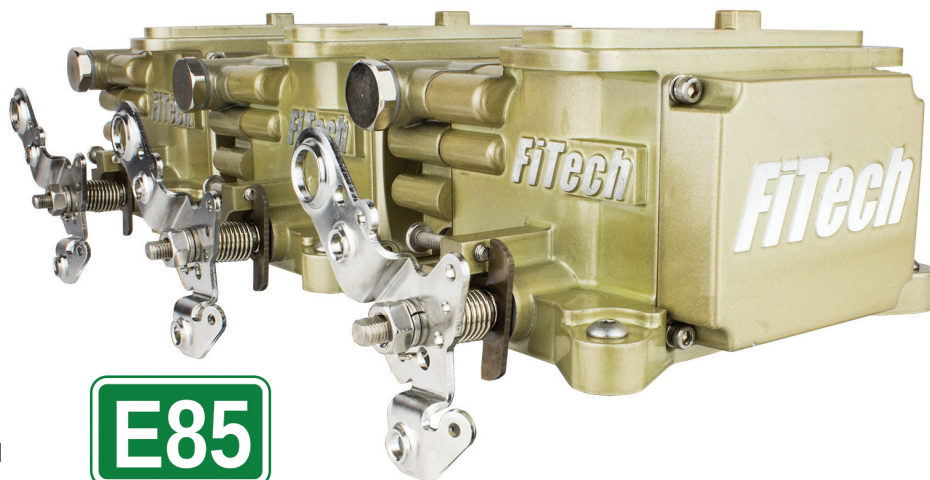
Go EFI 2 Barrel, 400HP System, PN 39001

Supplied with: Handheld controller, cable and windshield mount, throttle body vehicle side harness, WBO2 sensor, bung kit, coolant sensor, gasket, mini USB cable, instructions and warranty info.

System	Horsepower	Integrated ECU	Timing Control	Boost Compatible	Nitrous Compatible	Laptop Software	Injectors	Built-in Regulator	MAP Sensor	Fan Control	AC Input	E85
39001	100-400	Yes	Yes	No	No	No	4	Yes	1-Bar	1	No	Yes
39610	200-600	No	Yes	No	No	No	6	No	1-Bar	1	Yes	Yes

GO EFI 3x2 600HP System

The Go EFI is supplied with three 500 CFM throttle bodies and our self-learning EFI technology to deliver the looks you want with the performance and driveability benefits that only fuel injection can deliver! The Go EFI 3x2 system will support up to 600 horsepower and is designed to be a simple, ready-to-run installation. The compact ECU is easy to mount and only needs a few engine parameters to get your hot rod engine fired up.



Go EFI Tri-Power 3x2, 600HP, PN 39610

Supplied with: Three throttle bodies, remote ECU, handheld controller, cable and windshield mount, throttle body vehicle side harness, WBO2 sensor, bung kit, coolant sensor, gasket, mini USB cable, instructions and warranty info.

Note: A fuel pressure regulator is required unless using a regulated fuel delivery system. See pages 24-28 for fuel delivery options. A universal linkage kit is available, PN 39611.



WARNING: Cancer or Reproductive Harm
www.P65warnings.ca.gov

Emission Controlled Vehicle Information: Not legal for use on Emissions Controlled Vehicles. Check with your local DMV, emissions testing facility or applicable State laws before installing.

11



USA 951-340-2624
CANADA 877-521-7787



sales@fitechefi.com



www.fitechefi.com

FiTech
Fuel Injection

GO EFI 2x4 625HP System

Let everyone know you mean business with a pair of 4-barrels crowned atop your engine! The 2x4 is supplied with two throttle bodies, one with the brains and integral ECU, the other with the brawn. Both bodies feature four injectors and will support up to 625 horsepower (naturally aspirated). Thanks to a multi-bolt pattern, the 2x4 system will bolt onto most intakes including tunnel rams or cross rams. Through the advanced self tuning capabilities of the efficient ECU, you'll have your engine fired up, idling smooth and making big power in no time!



Go EFI 2x4 625HP System
Bright Aluminum, PN 30061
Matte Black, PN 30062



Supplied with: Two throttle bodies, handheld controller, cable and windshield mount, throttle body vehicle side harness, WBO2 sensor, bung kit, coolant sensor, gasket, mini USB cable, instructions and warranty info.



System	Horsepower	Integrated ECU	Timing Control	Boost Compatible	Nitrous Compatible	Laptop Software	Injectors	Built-in Regulator	MAP Sensor	Fan Control	AC Input	E85
30061/2	200-625	Yes	Yes	No	No	No	8	Yes	1-Bar	1	No	Yes
30064/5	400-1200	Yes	Yes	Yes	Yes	Yes	8	Yes	2.5-Bar	2	Yes	Yes

GO EFI 2x4 1200HP Power Adder

Make a statement with a pair of throttle bodies feeding your 671 or 871 roots blower with this 2x4 Power Adder system. This kit will also support up to 1200hp on a naturally aspirated engine. Once fired up, the self-learning technology will get the engine idling and cruising in no time, but more detailed programming can be made through the advanced pro-tuning software including fuel and timing maps under boost or nitrous. One throttle body handles all of the brains while the second holds four additional injectors.



Go EFI 2x4 1200HP Power Adder System,
Matte Black, PN 30064
Bright Aluminum, PN 30065

Supplied with: Two throttle bodies, handheld controller, cable and windshield mount, throttle body vehicle side harness, WBO2 sensor, bung kit, coolant sensor, gasket, mini USB cable, Pro-tuning laptop software, instructions and warranty info.



MASTER KITS

Looking for an inclusive EFI Kit and fuel delivery solution? See pages 36-49 or check out www.fitechefi.com for a Master Kit that includes the EFI system along with an Inline Fuel Pump Kit, Force Fuel Kit, Tank Module or even a new Tank with an Internal Pump!



12 **WARNING:** Cancer or Reproductive Harm
www.P65warnings.ca.gov

Emission Controlled Vehicle Information: Not legal for use on Emissions Controlled Vehicles.
 Check with your local DMV, emissions testing facility or applicable State laws before installing.

FiTech
 Fuel Injection



USA 951-340-2624
 CANADA 877-521-7787



sales@fitechefi.com



www.fitechefi.com

ULTRA RAM KITS



PN 38301



**Now Available for
Big Block Chevys!**



PN 38302

Our Ultra Ram EFI Systems deliver outstanding port fuel injection performance with an aggressive looking sheet metal intake manifold. The design of the Ultra Ram intake performs as good as it looks and will support 600 HP for small blocks and up to 800 HP on big blocks.

The system comes ready to go out of the box with the injectors and fuel rails installed. The robust ECU is easy to mount and handles the air/fuel mixture targets with self-learning technology so no laptop is required. In fact, you only need to input a few engine specs into the color touch screen monitor to get the engine to run! The Ultra Ram is ideal for crate motors or your custom built engine and will deliver great performance with the looks to match.

Ultra Ram, Small Block Chevy, PN 38301

Ultra Ram, Big Block Chevy, Rectangle Port, PN 38302

Supplied with: Sheet metal intake, cast aluminum throttle body, remote mount ECU, main harness, handheld controller, cable and windshield mount, WBO2 sensor, bung kit, coolant sensor, gasket, mini USB cable, instructions and warranty info.

Note: A fuel pressure regulator is required unless using a regulated fuel delivery system.
See pages 22-26 for fuel delivery options.



MASTER KITS

Looking for an inclusive EFI Kit and fuel delivery solution? See pages 36-49 or check out www.fitechfi.com for a Master Kit that includes the EFI system along with an Inline Fuel Pump Kit, Force Fuel Kit, Tank Module or even a new Tank with an Internal Pump!

System	Horsepower	Integrated ECU	Timing Control	Boost Compatible	Nitrous Compatible	Laptop Software	Injectors	Built-in Regulator	MAP Sensor	Fan Control	AC Input	E85
38301	200-600	No	Yes	Yes	No	Yes	8	No	3-Bar	1	Yes	Yes
38302	200-800	No	Yes	Yes	No	Yes	8	No	3-Bar	1	Yes	Yes

WARNING: Cancer or Reproductive Harm
www.P65warnings.ca.gov

Emission Controlled Vehicle Information: Not legal for use on Emissions Controlled Vehicles.
Check with your local DMV, emissions testing facility or applicable State laws before installing.

13



USA 951-340-2624
CANADA 877-521-7787



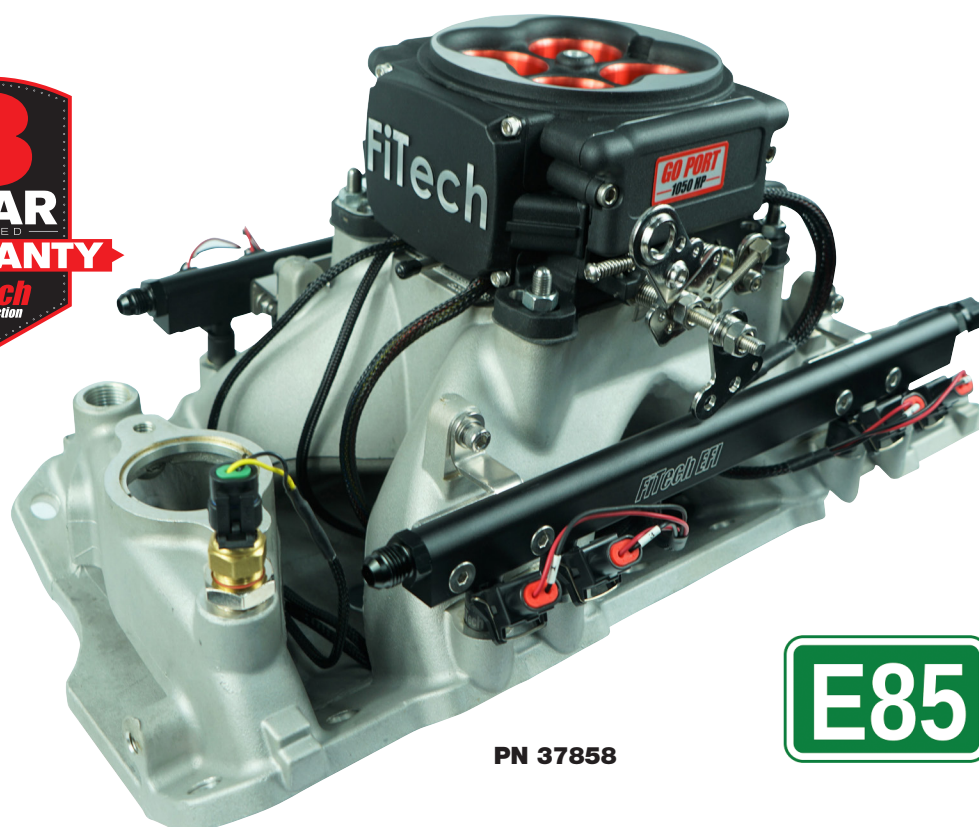
sales@fitechfi.com



www.fitechfi.com

FiTech
Fuel Injection

GO PORT EFI 500HP & 1050HP



PN 37858

E85

The Go Port EFI system features eight injectors placed precisely in each intake runner to inject fuel right into the cylinder head port resulting in excellent throttle response and overall performance.

FiTech offers two complete systems; a kit for up to 550 horsepower and a 1050 horsepower kit. Each system is supplied with a new aluminum intake machined and fitted with injectors (36 or 80 lbs), fuel rails, the wiring harness and an 850 cfm throttle body. The ECU, with its high speed processor, is integral to the throttle body along with the TPS, IAC, IAT and MAP sensors reducing wiring and making installation as easy as possible. All setup is handled through the color touchscreen monitor with no tuning experience necessary to have your engine fired up and running at its best.

Small Block Chevy
200-550 HP, PN 37854
550-1050 HP, PN 37858

Go Port Stand Alone System, PN 30014
 Using your own intake? This system is supplied with everything you need to adapt EFI to your intake and fuel rails.

Big Block Chevy
Oval Port, 200-550 HP, PN 30454
Oval Port, 550-1050 HP, PN 30458
Rectangle Port, 200-550 HP, PN 30254
Rectangle Port, 550-1050 HP, PN 30258

Supplied with: Throttle body, aluminum intake manifold, fuel rails, injectors, handheld controller, cable and windshield mount, wiring harness, WBO2 sensor, bung kit, coolant sensor, gasket, mini USB cable, Pro-tuning laptop software, instructions and warranty info.

System	Horsepower	Integrated ECU	Timing Control	Boost Compatible	Nitrous Compatible	Laptop Software	Injectors	Built-in Regulator	MAP Sensor	Fan Control	AC Input	E85
SBC	200-550	No	Yes	Yes	Yes	Yes	8	No	2.5-Bar	2	Yes	Yes
BBC	550-1050	No	Yes	Yes	Yes	Yes	8	No	2.5-Bar	2	Yes	Yes

14 **WARNING:** Cancer or Reproductive Harm
www.P65warnings.ca.gov

Emission Controlled Vehicle Information: Not legal for use on Emissions Controlled Vehicles.
 Check with your local DMV, emissions testing facility or applicable State laws before installing.

FiTech
 Fuel Injection



USA 951-340-2624
 CANADA 877-521-7787

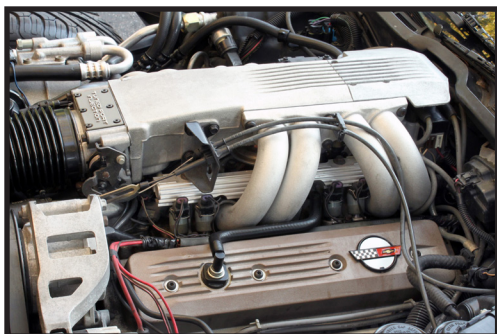


sales@fitechefi.com



www.fitechefi.com

RETRO-FIT GM TPI



E85



There are thousands of small-block Chevy engines that were fueled by their Tuned Port Injection (TPI) systems back the mid '80s to early '90s. These were popular engine swaps years ago, but the electronics and tuning left a lot to be desired. To help bring your GM TPI system up to date, we offer four Retro-Fit kits for these engines that provides improved calibration and tuning along with our proven self-learning EFI technology.

The robust ECU is easy to mount and connects through a complete wiring harnesses that is terminated with factory style connectors to ease installation. The harness plugs into the factory distributor, injectors and sensors. Then can easily be calibrated to your specifications through the color touchscreen handheld controller.

Retro-Fit SBC TPI System

Single O2 Sensor, PN 38350

Dual O2 Sensors, PN 38351

with 4L60/80E Trans Control

Single O2 Sensor, PN 38352

Dual O2 Sensors, PN 38353

Supplied with: ECU, handheld controller, cable and windshield mount, TPI wiring harness, WBO2 sensor, mini USB cable, instructions and warranty info.

Note: Works with OEM CTS, IAC, TPS and Knock Sensors.

- Upgrade old GM TPI systems to modern technology
- Improved driveability and performance
- No laptop required – easy to use touchscreen controller supplied
- New wiring harness connects to factory sensors and components
- Proven self-learning technology and performance
- Lock-up control for 200-4R/700-R4 trans
- Upgraded kits available for use with 4L60/80E transmissions

System	Horsepower	Integrated ECU	Timing Control	Boost Compatible	Nitrous Compatible	Laptop Software	Injectors	Built-in Regulator	MAP Sensor	Fan Control	AC Input	E85
38350	200-600	No	Yes	No	No	No	8	No	No	1	Yes	Yes

WARNING: Cancer or Reproductive Harm
www.P65warnings.ca.gov

Emission Controlled Vehicle Information: Not legal for use on Emissions Controlled Vehicles. Check with your local DMV, emissions testing facility or applicable State laws before installing.

15



USA 951-340-2624
CANADA 877-521-7787



sales@fitechefi.com



www.fitechefi.com


FiTech
Fuel Injection

ULTIMATE LS EFI SYSTEMS

We have made it easy to help finish your LS swap with our Ultimate LS Induction Systems. These systems are based on a short or long runner sheet metal intake manifold that comes complete with injectors, fuel rails, a cast throttle body and everything you need to install the system (cam and crank sensors not included). Different systems are available to support 500-1,000 HP and to fit different port styles. Complete kits are available with fuel systems and performance coils!



- Cast, cable activated throttle body with a 92mm or 102mm inlet
- Self-learning technology maintains your target air/fuel ratio settings
- Sequential fuel and spark control with individual cylinder trim
- Connects to 24x and 58x crank sensors and 1x or 4x cam sensors
- Connects to factory knock sensors
- 3-Bar MAP sensor for boosted applications up to 30-psi
- Tach output driver works with most tachs
- Two programmable electric fan outputs
- Supplied with WBO2 Sensors (one with 500HP Kit)
- Custom wiring harness for a direct plug-in installation
- Systems with trans control allows shift point and firmness adjustments on 4L60/65/80/85E transmissions

16  **WARNING:** Cancer or Reproductive Harm
www.P65warnings.ca.gov

Emission Controlled Vehicle Information: Not legal for use on Emissions Controlled Vehicles.
Check with your local DMV, emissions testing facility or applicable State laws before installing.

FiTech
Fuel Injection



USA 951-340-2624
CANADA 877-521-7787



sales@fitechefi.com



www.fitechefi.com

LS ENGINE EFI Systems

The Ultimate LS Induction Systems are designed as a complete induction and EFI system for your LS engines with kits to support 500, 750 and 1,000 HP. We offer a number of Master Kits that are supplied with fuel delivery systems as well as our Go Spark LS3 Coils.

For a complete list of MASTER KITS, go to www.fitechefi.com

	Intake/EFI	Master Kit w/ Inline Pump Kit	Master Kit w/ Force Fuel Kit	w/ Intank Module, 340LPH Pump Regulator, LS3 Coils	w/Intank Module 440LPH Pump and Regulator
Ultimate LS Kits, 500HP without Trans Control					
LS1/LS2/LS6, Short Intake	70001*	71001*	75201	79601	76101
LS1/LS2/LS6, Tall Intake	70006*	71006*	75206	79606	76106
LS3/L92	70011*	71011*	75211	79611	76111
LS7 Square Port	70015*	71015*	75215		76115
Ultimate LS Kits, 500HP with Trans Control					
LS1/LS2/LS6, Short Intake	70002*	71002*	75202	79602	76102
LS1/LS2/LS6, Tall Intake	70007*	71007*	75207	79607	76107
LS3/L92, Short Intake	70012*	71012*	75212	79612	76112
LS7 Square Port	70016*	71016*	75216		76116
Ultimate LS Kits, 750HP without Trans Control					
LS1/LS2/LS6, Short Intake	70003*	71003*	75203	79603	76103
LS1/LS2/LS6, Tall Intake	70008*	71008*	75208	79608	76108
LS3/L92	70013*	71013*	75213	79613	76113
LS7 Square Port	70017*	71017*	75217		76117
Ultimate LS Kits, 750HP with Trans Control					
LS1/LS2/LS6, Short Intake	70004*	71004*	75204	79604	76104
LS1/LS2/LS6, Tall Intake	70009*	71009*	75209	79609	76109
LS3/L92	70014*	71014*	75214	79614	76114
LS7 Square Port	70018*	71018*	75218		76118
Ultimate LS Kits, 1,000HP without Trans Control					
LS1/LS2/LS6, Short Intake	70030				76130
LS1/LS2/LS6, Tall Intake	70032				76132
LS3/L92	70034				76134
LS7 Square Port	70036				76136
Ultimate LS Kits, 1,000HP with Trans Control					
LS1/LS2/LS6, Short Intake	70031				76131
LS1/LS2/LS6, Tall Intake	70033				76133
LS3/L92	70035				76135
LS7 Square Port	70037				76137

***Regulator Required, see page 28.**

LS Port ID

Over the 20+ years that the Gen III small block has been available, GM has used a number of different intake port configurations. We offer LS EFI intake systems to cover most OEM applications including aftermarket heads. These drawings will help you determine your intake ports.

***Find
more LS
systems
here!***



WARNING: Cancer or Reproductive Harm
www.P65warnings.ca.gov

Emission Controlled Vehicle Information: *Not legal for use on Emissions Controlled Vehicles. Check with your local DMV, emissions testing facility or applicable State laws before installing.*



USA 951-340-2624
CANADA 877-521-7787



sales@fitechefi.com



www.fitechefi.com

FiTech ***Fuel Injection***

RETRO-LS TBI with Trans Control



There are many hot rodders out there that want the performance of an LS engine, but prefer the old school looks of a carburetor. FiTech's Retro LS TBI is plated in classic carburetor gold and bolts to an LS intake made for carburetors to deliver all the driveability benefits of a factory EFI system.

For ease of installation, our wiring harness is already terminated with the specific LS engine sensors, including the factory knock sensors to complement the built-in timing control. On top of that, the ECU also has the ability to control the transmission shift points and characteristics of the popular 4L60/65/80E transmissions. No laptop is required and the system will work on 24x or 58x crank sensors.

Retro-LS Kit, Classic Gold, PN 37001

Supplied with: Throttle body, remote ECU, handheld controller, cable and windshield mount, LS wiring harness, WBO2 sensor, bung kit, gaskets, mini USB cable, instructions and warranty info.



System	Horsepower	Integrated ECU	Timing Control	Boost Compatible	Nitrous Compatible	Laptop Software	Injectors	Built-in Regulator	MAP Sensor	Fan Control	AC Input	E85
37001	250-650	No	Yes	Yes	Yes*	No	4	No	3-Bar	2	Yes	Yes
70081/82	250-750	No	Yes	Yes	Yes*	Yes	8	No	3-Bar	2	Yes	Yes

*Disables AC input, Wet Nitrous only

RETRO-LS 2x4

PN 70081



Looking for something different and cool for your LS engine? The dual quad throttle body system will surely stand out in a sea of LS engines thanks to our unique sheet metal intake manifold topped with two throttle bodies!

This trick intake is plumbed with fuel rails and eight injectors set up as a sequential EFI system. Thanks to our well proven self-learning technology, the 2x4 will idle smooth and cruise at low rpm, but is ready to go when you hit the pedal.

Retro-LS 2x4 EFI System Gold, PN 70081 Matte Black, PN 70082

Supplied with: Sheet metal intake, fuel rails, injectors, throttle bodies, remote ECU, handheld controller, cable and windshield mount, LS wiring harness, WBO2 sensor, bung kit, MAP sensor, gaskets, mini USB cable, instructions and warranty info.

Note: A fuel pressure regulator is required unless using a regulated fuel deliver system. See pages 24-28 for fuel delivery options.



18 **WARNING:** Cancer or Reproductive Harm
www.P65warnings.ca.gov

Emission Controlled Vehicle Information: Not legal for use on Emissions Controlled Vehicles.
Check with your local DMV, emissions testing facility or applicable State laws before installing.

FiTech
Fuel Injection



USA 951-340-2624
CANADA 877-521-7787



sales@fitechefi.com



www.fitechefi.com

RETRO-LS 3x2



E85



If you're putting an LS engine in a muscle car, there's no better induction system than a tri-power setup. FiTech now offers an exclusive sheet metal intake to bolt onto an LS giving you the true muscle car appearance but with the modern driveability and performance that you crave.

The new 3x2 system features three 500 cfm throttle bodies that are finished in a classic gold to enhance the muscle car vibe. The self-learning technology provides quick starts, smooth idle and great throttle response without the overly rich fueling of old-school carbs. The harness plugs into the LS cam, crank, and coolant sensors and is simple to setup with the supplied touch screen monitor.

Retro-LS 2x3 EFI System, PN 70080

Supplied with: Sheet metal intake, fuel rails, injectors, throttle bodies, remote ECU, handheld controller, cable and windshield mount, LS wiring harness, WBO2 sensor, bung kit, MAP sensor, gaskets, mini USB cable, instructions and warranty info.

Note: A fuel pressure regulator is required unless using a regulated fuel delivery system. See pages 24-28 for fuel delivery options. A universal linkage kit is available, PN 39611.

System	Horsepower	Integrated ECU	Timing Control	Boost Compatible	Nitrous Compatible	Laptop Software	Injectors	Built-in Regulator	MAP Sensor	Fan Control	AC Input	E85
70080	250-750	No	Yes	Yes	Yes*	Yes	8	No	3-Bar	2	Yes	Yes
70050/51	NA	No	Yes	Yes	Yes*	Yes	8	No	3-Bar	2	Yes	Yes

*Disables AC input, Wet Nitrous only

STANDALONE LS EFI

E85



Supplied with: ECU, handheld controller, cable and windshield mount, LS wiring harnesses, MAP sensor, WBO2 sensors, bung kits, mini USB cable, instructions and warranty info.

If you've located a donor LS engine or even a new crate engine with the factory intake, injectors and sensors, FiTech has an easy and affordable system to manage the fuel delivery and ignition with the Stand Alone EFI System.

A compact ECU is easy to mount and efficiently controls the air/fuel mixture feeding the engine. Our proven self-learning technology keeps the engine running exactly where you program it through the supplied touch screen controller. A complete wiring harness is supplied along with two WB02 sensors for a complete installation to your new LS powerplant.



Standalone LS EFI System without Trans Control, PN 70050 with Trans Control, PN 70051

WARNING: Cancer or Reproductive Harm
www.P65warnings.ca.gov

Emission Controlled Vehicle Information: Not legal for use on Emissions Controlled Vehicles. Check with your local DMV, emissions testing facility or applicable State laws before installing.

19



USA 951-340-2624
CANADA 877-521-7787



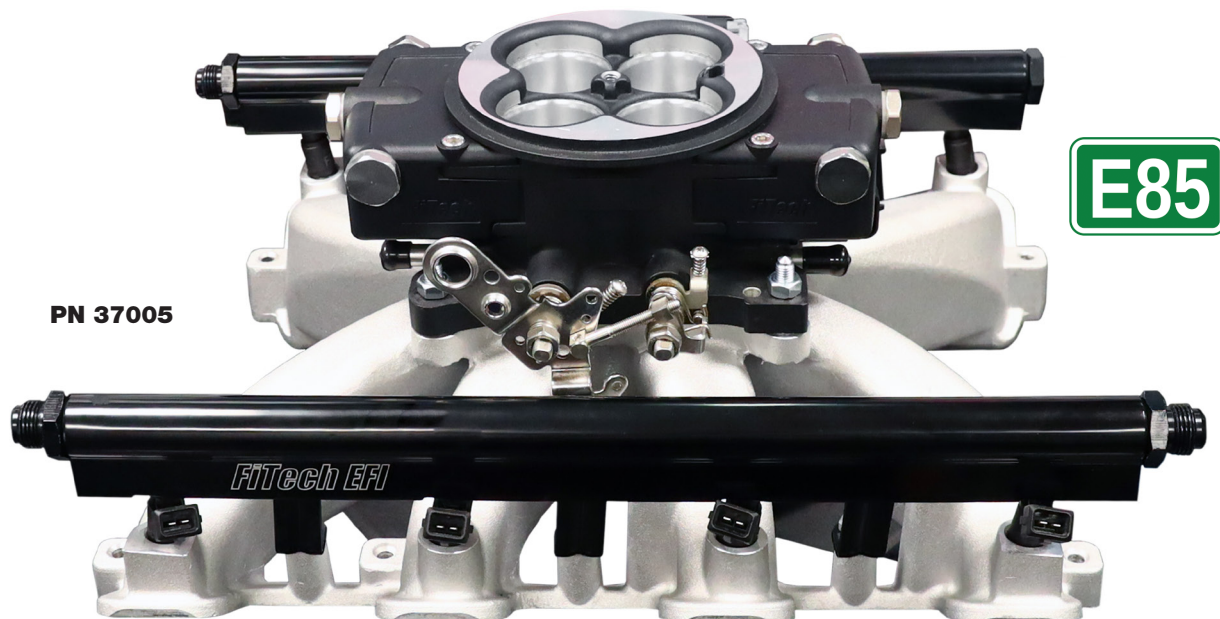
sales@fitechefi.com



www.fitechefi.com

FiTech
Fuel Injection

RETRO LS PORT EFI



E85

PN 37005

The latest edition to the FiTech Retro-LS EFI line is based on a high flowing cast aluminum intake machined with injectors in each port for the most efficient fuel delivery available. A throttle body mounts to the top of the manifold to accept a standard round air filter providing a classic hot rod appearance under the hood.

Don't let the old school looks fool you as this port fuel injected system is packed with performance and modern technology. Our advanced self-learning technology easily monitors and adapts to the engine's requirements and is easy to dial-in with the supplied color touch screen monitor. The system is boost and nitrous compatible and features controls for a 4L60/65/80E transmission.



PN 37003

LS1 Retro Port System
Matte Black – PN 37005
Classic Gold – PN 37006

LS3 Retro Port System
Matte Black – PN 37002
Classic Gold – PN 37003



Supplied with: Cast aluminum intake manifold, fuel rails, throttle body, injectors, remote ECU, handheld controller, cable and windshield mount, LS wiring harness, two O2 sensors, bung kits, 3-Bar TMAP sensor, gaskets, -6 and -8 AN inlet fittings, mini USB cable, instructions and warranty information.

System	Horsepower	Integrated ECU	Timing Control	Boost Compatible	Nitrous Compatible	Laptop Software	Injectors	Built-in Regulator	MAP Sensor	Fan Control	AC Input	E85
37005/6	250-750	No	Yes	Yes	Yes*	Yes	4	No	3-Bar	2	Yes	Yes
37002/3	250-750	No	Yes	Yes	Yes*	Yes	8	No	3-Bar	2	Yes	Yes

*Disables AC input, Wet Nitrous only

20 **WARNING:** Cancer or Reproductive Harm
www.P65warnings.ca.gov

Emission Controlled Vehicle Information: Not legal for use on Emissions Controlled Vehicles.
 Check with your local DMV, emissions testing facility or applicable State laws before installing.

FiTech
 Fuel Injection



USA 951-340-2624
 CANADA 877-521-7787



sales@fitechefi.com



www.fitechefi.com

HIGH FLOW AIR FILTERS

Top off your FiTech Fuel Injection upgrade with a High Flow Air Filter Assembly! These new filters are available in a 14" diameter with a 1.5" drop base for hood clearance, a Conical design for LS and UltraRam systems and a trio of finned air cleaners for our 3x2 setups for a classic hot rod look. Each filter features an effective woven synthetic element to effectively capture particles ensuring that only clean air reaches the throttle body and engine.

14" Round Filter Assembly with 1.5" Drop Base and Mounting Hardware



NEW!

Carbon Fiber Top
2" Element - PN 42201
3" Element - PN 42301



NEW!

Matte Black
2" Element - PN 42202
3" Element - PN 42302



NEW!

Chrome
2" Element - PN 42200
3" Element - PN 42300



Banjo Fittings

These new Banjo Fittings make it easier to route fuel lines to and from the throttle body. The fittings are also designed for a slim, tight fit providing the clearance needed to run a drop base air cleaner on our throttle bodies (except Classic Series, PN 30020 and 30021).

Inlet, PN 62018
Outlet, PN 62019

NEW!



92mm, 4-Inch Inlet
6-Inch, PN 41000
9-Inch, PN 41001



102mm, 4.25-Inch Inlet
6-Inch, PN 41002
9-Inch, PN 41003



3x2 D-Shaped Finned Assemblies
Polished, PN 42400
Cast, PN 42401
Mounting hardware included



WARNING: Cancer or Reproductive Harm
www.P65warnings.ca.gov

Emission Controlled Vehicle Information: Not legal for use on Emissions Controlled Vehicles.
Check with your local DMV, emissions testing facility or applicable State laws before installing.

21



USA 951-340-2624
CANADA 877-521-7787



sales@fitechefi.com



www.fitechefi.com

FiTech
Fuel Injection

GO SPARK LS3 COILS



PN 79110



PN 79210

Our LS3 style coils will help complete your LS EFI swap or even update your modern muscle car with a fresh jolt of energy. The Go-Spark LS Coils were developed to deliver optimum output with a quality fit and reliability. The Coils bolt-in place of the originals and accept the sealed, locking connector and plug wire terminal for a simple upgrade.

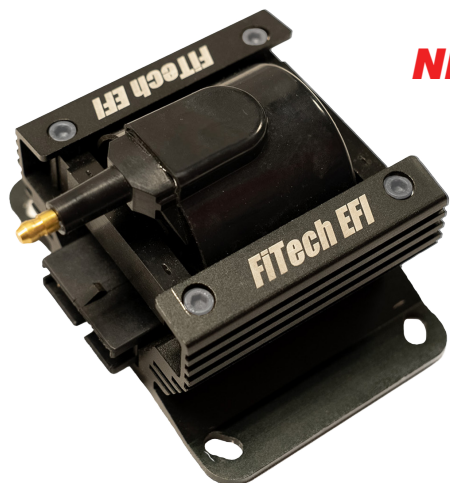
If you're looking for a little more dazzle under your hood, we also offer a Coil with a built-in LED that flashes when the coil is firing!

Go Spark Coil, no LED
Single, PN 79110
8-Pack, PN 79100

Go Spark Coil, with LED
Single, PN 79210
8-Pack, PN 79200



GO SPARK CDI COIL



NEW!

This coil features optimized windings and materials to produce a reliable, high output spark. The coil is ideal for use with our Go Spark CDI Ignitions (see page 23).

Go Spark CDI Coil, PN 90001



GO SPARK CDI

You've got the fuel, now upgrade the spark with our Go Spark Capacitive Discharge Ignitions! The Go-Spark CDI produces a series of multiple sparks below 2,500 rpm to improve starting, idle quality and throttle response. At higher rpm, the CD technology continues to deliver full energy sparks through racing rpm to ensure complete combustion of the fuel mixture.

The Go-Spark CDI was designed for 4, 6 and 8-cylinder engines equipped with a distributor. It accepts the trigger signal from an HEI, amplifier, points or 2-wire non-magnetic pickup distributors. A separate 12 volt square wave tach output can be used to trigger the EFI system and/or a tach.

Go Spark CDI, PN 91000

SPECS	PN 91000	PN 91001
Spark Energy:	150mJ	450/200mJ
Primary Voltage:	450	450/500
Spark Duration:	20°	20°
Multi-Spark to	2,500 rpm	2,500 rpm
Battery Supply:	6-18 Volts	6-18 Volts
Max RPM:	10,000	10,000



PN 91000



GO SPARK ADVANCED CDI

Street machines or bracket cars will like the features built into the new Advanced CDI! When cruising on the street, the output of the Advanced CDI can remain at long-distance friendly spark strength, but when you're ready to turn things up, the output can be switched to deliver up to 500 primary volts with 200mJ of spark energy. This stronger spark will help burn fuel with high boost or nitrous!

The Advanced CDI also features a built-in burnout, staging and over-rev rpm limiter plus a starting retard and single stage of retard for nitrous oxide applications. All of these features are programmed through the push button programming and LED read out on the ignition housing. No apps or monitors to connect to keep adjustments easy.

Advanced CDI, PN 91001



NEW!

PN 91001



WARNING: Cancer or Reproductive Harm
www.P65warnings.ca.gov

Emission Controlled Vehicle Information: Not legal for use on Emissions Controlled Vehicles. Check with your local DMV, emissions testing facility or applicable State laws before installing.

23



USA 951-340-2624
CANADA 877-521-7787



sales@fitechefi.com



www.fitechefi.com

FiTech
Fuel Injection

GO FUEL Force Fuel Systems



The heavy duty bracket can be installed on the bottom or side of the tank to ease mounting.

The Force Fuel System mounts under the hood and is fed with the original mechanical or electric fuel pump then supplies the EFI system with the required high pressure through the use of an internal 340-LPH pump. This means you don't need to run a new feed line from the tank!

The assembly is easy to mount with a bottom or side bracket and to ensure clean fuel reaches the injectors, a serviceable 10-micron fuel filter is supplied. The reservoir holds half-a-gallon of fuel to submerge an internal electric fuel pump to keep it cool and no chance of fuel starvation. An internal regulator keeps the pressure at a consistent 58-psi, ideal for reliable EFI performance.

Force Fuel System, PN 50004

Supplied with 5-feet of high pressure fuel hose, 10-micron fuel filter, AN fittings, return line fitting bung and liquid filled gauge.

DETAILS

- Supports the fuel demands of an 800-hp engine on gas
- No fuel slosh - ideal for autocross and off-road
- Effective 10-micron serviceable filter ensures the best filtration
- Increased fuel capacity over other systems – no chance of cavitation, even under hard cornering or acceleration
- Capable of running with E-85, ethanol or methanol based fuels

24



WARNING: Cancer or Reproductive Harm
www.P65warnings.ca.gov

Emission Controlled Vehicle Information: Not legal for use on Emissions Controlled Vehicles. Check with your local DMV, emissions testing facility or applicable State laws before installing.

FiTech
Fuel Injection



USA 951-340-2624
CANADA 877-521-7787



sales@fitechefi.com



www.fitechefi.com

GO FUEL Force Fuel Systems

Mini Force - 600HP

The popularity of the Force Fuel System spurred the demand for a smaller version to fit cramped engine compartments.

The Mini Force is fed through a low-pressure mechanical (or electric) pump saving the need to modify the entire fuel system. The reservoir of the Mini is equipped with an efficient 255-LPH pump and internal regulator to deliver a consistent 58-psi of fuel pressure for your EFI system.

The compact design of the new Mini Force Fuel fits easily under the hoods of street rods and smaller engine compartments. To make installing the Mini easier, its mounting bracket is designed to be installed in four positions.

Mini Force Fuel, PN 50006

Supplied with high pressure fuel hose, AN fittings, return line fitting bung and liquid filled gauge



Compact Size!

**8" Tall
5" Wide
4.5" Deep**



Dual Force - 1,600HP

The FiTech Dual Pump Force Fuel System makes the upgrade to EFI easy while supporting serious horsepower – up to 1,600 horsepower (NA)!

The system works with a mechanical or electric fuel pump to supply the Force Fuel reservoir with fuel where it is then fed through two internal 340-LPH pumps to feed the EFI system. Dual internal regulators keep the pressure at 58-psi which is ideal for reliable EFI performance.

With a strong, versatile mounting bracket, the Force Fuel System easily mounts under the hood. The assembly holds half-a-gallon of fuel to submerge the efficient pumps with no chance of fuel starvation.

Dual Force Fuel, PN 50005

**Supports
up to
1,600 (NA)!**



**10" Tall
7" Wide
5" Deep**



WARNING: Cancer or Reproductive Harm
www.P65warnings.ca.gov

Emission Controlled Vehicle Information: Not legal for use on Emissions Controlled Vehicles. Check with your local DMV, emissions testing facility or applicable State laws before installing.

25



USA 951-340-2624
CANADA 877-521-7787



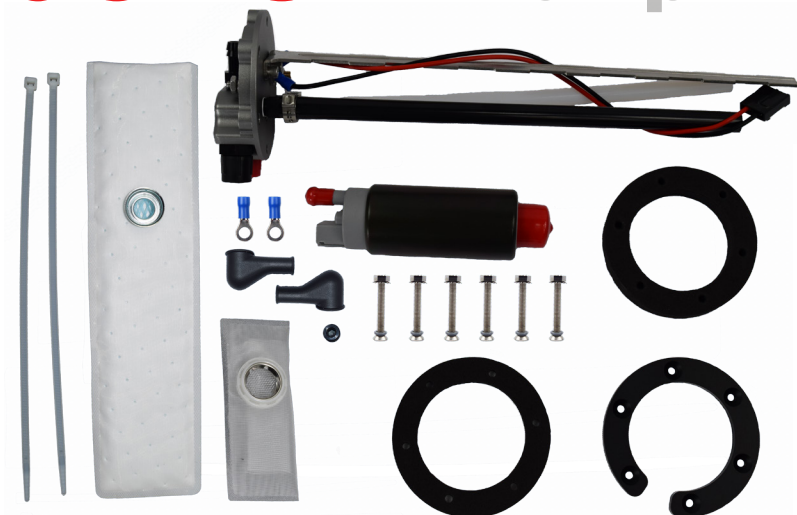
sales@fitechefi.com



www.fitechefi.com

FiTech
Fuel Injection

GO FUEL Pump Modules



In-Tank Pump Module

Our universal Pump Module can be used on tanks with a depth of 6" to 15". The billet top assembly was designed with the supply and return ports in a parallel position to help route the fuel lines easily and evenly. The vent port is on the other side to ease routing the line near the fill tube. The two fuel ports are threaded to accept -6 AN O-ring boss fittings for a secure, leak-free connection. A 340 LPH pump is included along with gaskets, terminals and clamps.

In-Tank Pump Module
with 340LPH Pump, PN 50015
with 440LPH Pump, PN 50016
with 225LPH Pump, PN 50014 *NEW!*



Fuel Cell Pump Module

If you're running a fuel cell or custom tank, this Pump Module is the solution to your high pressure fuel needs. The billet top assembly is machined with a 2" filler assembly as well as an internal regulator to maintain 58-psi. This system is designed so no return line is needed! The Module is machined to fit fuel cells with a 12-bolt flange or can be installed on any tank with the supplied hardware. The single pump module supports up to 800 hp, while the dual pump module supports up to 1,600 hp.



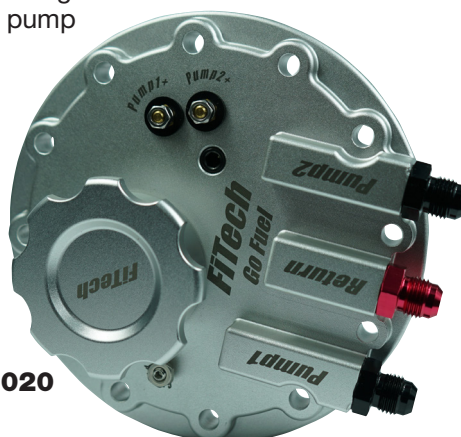
PN 50019

Fuel Cell Pump Modules
Single Pump, 800 HP, PN 50019
Dual Pump, 1600 HP, PN 50020

Filler Extensions
2-inch, PN 50019-2
3-inch, barb, PN 50019-3
4-inch, PN 50019-4

Filler Cap, PN 50019-1

PN 50020



REGULATED IN-TANK PUMP MODULE

E85

These In-Tank Modules feature a built-in regulator that maintains the fuel pressure at the desired 58-psi saving you time and the work of plumbing a regulator in-line. Each assembly can be used in tanks with a depth of 6" – 15". The feed port accepts a -6AN O-ring boss for a secure, leak-free connection. A required vent outlet is also machined. Thick gaskets and two length fuel socks are supplied.

Regulated In-Tank Pump Module with 255LPH Pump, PN 50017 with 340LPH Pump, PN 50018



EFI TANKS with Internal Pumps



FiTech now offers brand new tanks made to accept our In-Tank Pump Module! These new tanks are designed as direct bolt-ins to popular muscle cars and classics making the swap to EFI even easier!

Fuel Injection demands higher pressure from an electric fuel pump and the best place to mount a pump is in the gas tank. Our new In-Tank Module secures the supplied electric pump and bolts directly into the new tank providing a modern EFI solution!

For a full listing of EFI-ready tanks, go to www.FiTechEFI.com

- Direct-fit tanks feature internal baffles for constant fuel delivery
- In-Tank Pump Module secures the supplied electric pump in the tank
- -6 AN inlet/outlet provide leak-free fuel line connections
- Recessed sending unit mount provides added clearance
- New mounting straps and fuel level sending unit supplied

E85

WARNING: Cancer or Reproductive Harm
www.P65warnings.ca.gov

Emission Controlled Vehicle Information: Not legal for use on Emissions Controlled Vehicles. Check with your local DMV, emissions testing facility or applicable State laws before installing.

27



USA 951-340-2624
CANADA 877-521-7787



sales@fitechefi.com



www.fitechefi.com

FiTech
Fuel Injection

GO FUEL Components



Regulators

The new Go Fuel Regulators allow you to set the fuel pressure precisely where your EFI system and engine require. Both models can be adjusted from 30 – 70 psi. Our Tight Fit regulators will support up to 1,000 horsepower while the High Horsepower model will support 2,000 HP. Crafted from billet aluminum, the regulators feature -6 ORB ports along with a vacuum/boost port and will accept a gauge. Two models are available; a compact 2-port unit as well as a larger, 4-port model.

Tight Fit, No Gauge, PN 54000
Tight Fit, with Gauge, PN 54001
High Horsepower, with Gauge, PN 54002



NEW!



Filter/Regulator, PN 55012

This premium filter and regulator combination provides an effective and easy way to plumb your fuel system. The compact design provides -6AN connections for a feed line with filtered fuel along with a return line connection while regulating the fuel system at the required 58-psi.



10-Micron Filter, PN 55002 100-Micron, PN 55003

These new serviceable fuel filters are designed to go between the fuel pump and the EFI system or carburetor. The billet assembly has -8 ORB ports and features a serviceable magnetic element that will trap debris from 100-microns to an even finer -10 microns to ensure nothing but clean fuel makes it to the injectors.



Universal Check Valve, PN 55001

This universal check valve will keep the fuel from leaking back into the fuel tank when your car is parked. This keeps the system primed and ready for quick starts and consistent performance.



ACCESSORIES

Inline Pump Kit, PN 50001

This kit is supplied with our heavy duty 255 LPH external fuel pump that is suitable to support engines producing up to 600 (NA) horsepower. The kit includes 40 feet of high pressure fuel hose, two fuel filters including a serviceable 10-micron filter, fittings, mounts and clamps.



Inline Fuel Pump, PN 50101

This fuel pump delivers performance and endurance. This is the same pump supplied with our 50001 Inline Fuel Pump Kit.



Fuel Pump Mounting Kit, PN 80110

This heavy duty billet fuel pump mounting bracket will fit both 52mm and 60mm diameter fuel pumps.



Fuel Pressure Gauges

15 psi, PN 80116
100 psi, PN 80115

15 psi, Liquid Filled, PN 80117
100 psi, Liquid Filled, PN 80118

These gauges will accurately display fuel pressure so you know exactly how your fuel system is pumping. Each gauge has an 1/8-NPT male filling on the back to thread to any 1/8-NPT port.



PN 80115

Complete Fuel Line Kits

These Fuel Line Kits will help you complete a fuel delivery system and safe for pump gas, methanol, ethanol or alcohol. Two materials are available, a braided stainless line or a new PTFE line. Both styles come in a natural finish or in black. Kits include 12 -6 fittings, a 10-micron filter and inline check valve.

Stainless Steel Line Kits

20ft Natural, PN 51001
40ft Natural, PN 51003
20ft Black, PN 51002
40ft Black, PN 51004

PTFE Hose Kits

20' Natural, PN 51005
40' Natural, PN 51007
20' Black, PN 51006
40' Black, PN 51008

NEW!



PN 51001

 **WARNING:** Cancer or Reproductive Harm
www.P65warnings.ca.gov

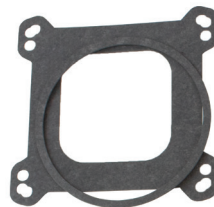
Emission Controlled Vehicle Information: Not legal for use on Emissions Controlled Vehicles. Check with your local DMV, emissions testing facility or applicable State laws before installing.



ACCESSORIES

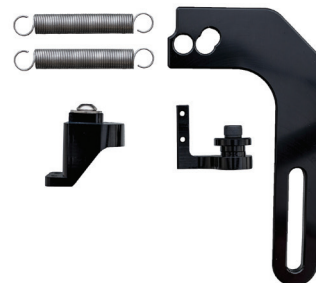
Throttle Body Gasket Kit, PN 60001

This kit includes both a 4150 and 4500 style base gasket as well as an air cleaner gasket.



Throttle Return Spring, PN 60011

This kit includes a bracket that bolts to the throttle body and provides a throttle return spring. Note that this kit only fits the FiTech 4-barrel throttle bodies.



Oxygen Sensor Bung Kit, PN 60012

This kit makes installing the required WB02 sensor easy without welding. Simply drill a hole in your exhaust, install the gasket and sensor fitting and secure it with the supplied heavy duty band clamps.



Ultimate LS Throttle Cable Bracket, PN 70063

Strong, steel bracket supplied with gaskets and hardware.



Replacement Injectors

These injectors are replacements for the throttle body and port fuel injection systems.

-5, 36-lb Injector, PN 10036

-6, 55-lb Injector, PN 10055

-3, 62-lb Injector, PN 10062

-4, 80-lb Injector, PN 10080

Fuel Hose

Our fuel hose is rated to handle high pressure EFI applications and is engineered to handle today's fuel blends, race gas or methanol based fuels. Available in -6 (3/8") and -8 (1/2") sizes.



High Pressure Fuel Hose

5ft -6, PN 80150-5

10ft -6, PN 80150-10

20ft -6, PN 80150-20

25ft -6, PN 80150-25

5ft -8, PN 80151

GO-SHIFT Transmission Controller

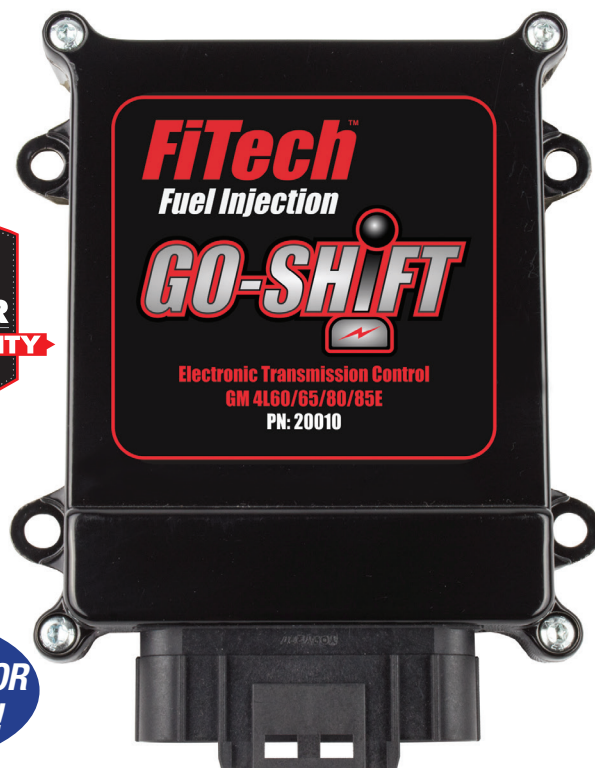
The Go-Shift stand-alone electronic transmission control unit is the perfect solution when it comes to managing a GM or Ford electronic 4-speed transmission. Like our EFI systems, the Go-Shift is designed to be easy to install, affordable and simple to program.

In fact, all of the transmission settings, including shift points, firmness and converter lock-up can be adjusted through the supplied handheld monitor! A harness, complete with OEM style sealed connectors, makes installation a plug 'n play affair while the compact ECU easily mounts out of the way. After setting up the trans, you can disconnect the monitor or keep it plugged in to view transmission data.

Go-Shift Transmission Control
GM 4L60/65/80/85LE, PN 20010
Ford AODE, PN 20011
Ford 4R70W, PN 20012



**AVAILABLE FOR
GM & FORD!**



Supplied with: ECU, transmission wiring harness, color touchscreen monitor, cable and dash mount.

- Easily adjust the rpm points and firmness of each shift
- Direct plug-in harness for ease of installation
- Speedometer calibration and output
- Compatible with paddle shift inputs
- Control the torque converter clutch lock-up



NO.	Transmi..(offline)	Cyl
01	RPM input Cylinders	8
02	All Shift Speed Mult	94.5
03	Perf Mode (0-4)	2
04	CalB Mode (0-4)	3
05	Tire Diameter	26.00
06	Axle Gear Ratio	3.89
07	Shift max RPM	5400

The Go-Shift Trans Controller is easy to setup up and tune through the supplied touchscreen controller.

WARNING: Cancer or Reproductive Harm
www.P65warnings.ca.gov

Emission Controlled Vehicle Information: Not legal for use on Emissions Controlled Vehicles. Check with your local DMV, emissions testing facility or applicable State laws before installing.

31



USA 951-340-2624
 CANADA 877-521-7787



sales@fitechefi.com



www.fitechefi.com

FiTech
 Fuel Injection

TOTAL PACKAGE EFI

For anyone with a sought after classic Chevy or Mustang, we're making it even easier to upgrade to EFI with our new Total Package systems! One part number provides you with everything needed to upgrade to the smooth power and reliable performance of a FiTech EFI system.

The new Total Package systems feature our proven, Easy Street 600-horsepower throttle body as the heart of the system. To provide the fuel, a new direct-fit fuel tank is included along with a complete fuel hose kit to supply the classic gold finished TBI. A complete steel braided hose kit is also included. A high-flow serviceable filter and AN-style fittings are supplied so that all of the connections can be made to complete your new fuel system!



Currently, our Total Package systems are available for a number of popular classic Chevy and early Mustang applications, but we will be adding more Packages soon – check our website for additional systems!

Complete EFI swap packages include:

- Easy Street EFI 600-hp TBI system in a classic gold finish
- Direct-fit stamped steel tank with an internal pump module
- High pressure fuel hose, fittings and filter
- Everything you need under one part number to complete your EFI swap



NEW!



TOTAL PACKAGE EFI Camaro



TOTAL PACKAGE EFI Chevelle



USA 951-340-2624
CANADA 877-521-7787



sales@fitechefi.com



www.fitechefi.com

FiTech
Fuel Injection

TOTAL PACKAGE EFI Tri-Five



TOTAL PACKAGE EFI Impala



34

FiTech
Fuel Injection



USA 951-340-2624
CANADA 877-521-7787



sales@fitechefi.com



www.fitechefi.com

TOTAL PACKAGE EFI Mustang



E85



Total Package EFI for:
 '64 - '68 Mustang, PN 38003
 '69 - '70 Mustang, PN 38004

NEW!



MORE APPLICATIONS

New Total Package EFI Kits are being added! If you don't see your application, check out www.fitechefi.com for more



MASTER KITS

Master Kits Include

If we don't have a Total Package EFI Kit for your car, you'll be able to find a MASTER KIT that will get you all the parts you'll need to complete your EFI swap. Each Master Kit is based on a specific EFI system, then is available with a fuel delivery system and even with our Go Spark CDI box. The following pages show the different MASTER KITS available with each of our EFI Kits.

Any EFI System



with a Fuel System



And an optional CDI



EFI System	Inline Kit, PN 50001	Force Fuel Sump Kit, PN 50004	Force Fuel Mini Sump Kit, PN 50006	In-Tank 255 LPH Kit, PN 50014	In-Tank 340 LPH Kit, PN 50015	In-Tank Regulated 255 LPH Pump, PN 50017	In-Tank Regulated 340 LPH Pump, PN 50018	In-Tank returnless 340 LPH Pump, PN 50019	Go Spark CD Ignition, PN 91000	Master Kit PN
PN 30005	✓									PN 31005
Easy Street		✓								PN 35205
600 HP			✓							PN 35505
Classic Gold				✓						PN 36105
					✓					PN 36205
						✓				PN 36305
							✓			PN 36505
								✓		PN 36605
									✓	PN 93005
	✓								✓	PN 93105
		✓							✓	PN 93505
			✓						✓	PN 93555
				✓					✓	PN 93605
								✓	✓	PN 96205
					✓				✓	PN 96505



System	Horsepower	Integrated ECU	Timing Control	Boost Compatible	Nitrous Compatible	Laptop Software	Injectors	Built-in Regulator	MAP Sensor	Fan Control	AC Input	E85
30005	200-600	Yes	No	No	No	No	4	Yes	1-Bar	1	Yes	Yes

MASTER KITS Go-Street 600HP

With a classic gold finish, this Go Street system may have the looks of a factory carb, but the similarities end there. The pre-programmed assembly bolts right in place on a square-bore intake manifold and requires only a minimum of inputs to fire up. The Easy Street accepts the tach signal from the coil negative, an HEI distributor or from a CD ignition box for simple installation. A fast reacting wide-band O2 sensor is supplied to monitor the fuel burn signaling the self-learning technology of the ECU on adjustments to the mixture resulting in smooth performance from idle to high rpm.



Master Kit PN 36205 includes In-Tank 340 LPH Kit and Easy Street 600 HP EFI Kit.

E85

EFI System	Inline Kit, PN 50001	Force Fuel Sump Kit, PN 50004	Force Fuel Mini Sump Kit, PN 50006	In-Tank 255 LPH Kit, PN 50014	In-Tank 340 LPH Kit, PN 50015	In-Tank Regulated 255 LPH Pump, PN 50017	In-Tank Regulated 340 LPH Pump, PN 50018	In-Tank returnless 340 LPH Pump, PN 50019	Go Spark CD Ignition, PN 91000	Master Kit PN
PN 30005	✓									PN 31005
Easy Street		✓								PN 35205
600 HP			✓							PN 35505
Classic Gold				✓						PN 36105
					✓					PN 36205
						✓				PN 36305
							✓			PN 36505
								✓		PN 36605
									✓	PN 93005
	✓								✓	PN 93105
		✓							✓	PN 93505
			✓						✓	PN 93555
				✓					✓	PN 93605
					✓				✓	PN 96205
						✓			✓	PN 96505



System	Horsepower	Integrated ECU	Timing Control	Boost Compatible	Nitrous Compatible	Laptop Software	Injectors	Built-in Regulator	MAP Sensor	Fan Control	AC Input	E85
30005	200-600	Yes	No	No	No	No	4	Yes	1-Bar	1	Yes	Yes

WARNING: Cancer or Reproductive Harm
www.P65warnings.ca.gov

Emission Controlled Vehicle Information: Not legal for use on Emissions Controlled Vehicles. Check with your local DMV, emissions testing facility or applicable State laws before installing.

37



USA 951-340-2624
CANADA 877-521-7787



sales@fitechefi.com



www.fitechefi.com

FiTech
Fuel Injection

MASTER KIT Go Street 400HP

The Go Street EFI is a ready-to-run system that sticks to the basic functions necessary to get the best performance and economy out of your street and mild performance engine. This throttle body system is economically priced and delivers the benefits of quick starts, smooth idle and self-learning technology.



Master Kit PN 35503 includes Force Fuel Mini Sump and Go Street 400 HP EFI Kit.

E85

	EFI System	Inline Kit, PN 50001	Force Fuel Sump Kit, PN 50004	Force Fuel Mini Sump Kit, PN 50006	In-Tank 255 LPH Kit, PN 50014	In-Tank 340 LPH Kit, PN 50015	In-Tank Regulated 255 LPH Pump, PN 50017	In-Tank Regulated 340 LPH Pump, PN 50018	In-Tank returnless 340 LPH Pump, PN 50019	Go Spark CD Ignition, PN 91000	Master Kit PN
PN 30003	✓										PN 31003
Go Street		✓									PN 35203
EFI			✓								PN 35503
400 HP				✓							PN 36103
Cast Finish					✓						PN 36203
							✓				PN 36303
						✓					PN 36503
							✓				PN 36603
								✓			PN 93003
	✓							✓			PN 93103
		✓						✓			PN 93503
			✓					✓			PN 93553
				✓				✓			PN 93603
					✓			✓			PN 96203
						✓		✓			PN 96503



System	Horsepower	Integrated ECU	Timing Control	Boost Compatible	Nitrous Compatible	Laptop Software	Injectors	Built-in Regulator	MAP Sensor	Fan Control	AC Input	E85
30003	100-400	Yes	No	No	No	No	4	Yes	1-Bar	1	Yes	Yes

38



WARNING: Cancer or Reproductive Harm
www.P65warnings.ca.gov

Emission Controlled Vehicle Information: Not legal for use on Emissions Controlled Vehicles. Check with your local DMV, emissions testing facility or applicable State laws before installing.

FiTech
Fuel Injection



USA 951-340-2624
CANADA 877-521-7787



sales@fitechefi.com



www.fitechefi.com

MASTER KIT Go EFI 2 Barrel

There are a lot of enthusiasts out there looking to update their 2-barrel fed cruisers with the driveability benefits of electronic fuel injection. The Go EFI 2 Barrel EFI system bolts to common H-2300 and R2G manifolds (with a TD-P#2086 adapter). The ECU is incorporated into the throttle body producing a simple installation with only a few wires to connect (fuel pump, ignition, power, and tach).



Master Kit PN 36691 includes In-tank Regulated 340 LPH Pump and Go EFI 2 Barrel TBI System.

E85

	EFI System	Inline Kit, PN 50001	Force Fuel Sump Kit, PN 50004	Force Fuel Mini Sump Kit, PN 50006	In-Tank 255 LPH Kit, PN 50014	In-Tank 340 LPH Kit, PN 50015	In-Tank Regulated 340 LPH Pump, PN 50018	In-Tank Returnless 340 LPH Pump, PN 50019	In-Tank Dual Pump Module, PN 50020	Go Spark CD Ignition, PN 91000	Master Kit PN
PN 39001	✓										PN 31091
Go EFI		✓									PN 35001
2 Barrel			✓								PN 35591
400 HP				✓							PN 36001
Go Street							✓				PN 36191
EFI								✓			PN 36300
											PN 36691
	✓								✓		PN 93191
		✓							✓		PN 93500
			✓						✓		PN 93559
				✓					✓		PN 93600
					✓				✓		PN 93901
						✓			✓		PN 93991
							✓		✓		PN 96001
								✓	✓		PN 96791



System	Horsepower	Integrated ECU	Timing Control	Boost Compatible	Nitrous Compatible	Laptop Software	Injectors	Built-in Regulator	MAP Sensor	Fan Control	AC Input	E85
39001	100-400	Yes	Yes	No	No	No	4	Yes	1-Bar	1	No	Yes

WARNING: Cancer or Reproductive Harm
www.P65warnings.ca.gov

Emission Controlled Vehicle Information: Not legal for use on Emissions Controlled Vehicles. Check with your local DMV, emissions testing facility or applicable State laws before installing.

39



USA 951-340-2624
CANADA 877-521-7787



sales@fitechefi.com



www.fitechefi.com

FiTech
Fuel Injection

MASTER KITS Go EFI 4 600HP

The Go EFI 4 self-tuning fuel injection system is ideal for everyday drivers to weekend cruisers or even bracket cars making up to 600hp. The throttle body, available in bright aluminum or matte black, easily fits any 4-bbl intake manifold. Thanks to the built-in ECU, MAP sensor and fuel pressure regulator, wiring is kept to just a few connections for an easy install.



Master Kit PN 35202 includes Force Fuel Sump Kit and Go EFI 600HP TBI Kit in Matte Black.

E85

Go EFI 600 HP TBI Kit	EFI System										PN	
	✓	✓	✓	✓	✓	✓	✓	✓	✓	✓	31001	31002
											PN 35201	PN 35202
											PN 35501	PN 35502
											PN 36101	PN 36102
											PN 36201	PN 36202
											PN 36301	PN 36302
											PN 36501	PN 36502
											PN 36601	PN 36602
											PN 93001	PN 93002
											PN 93101	PN 93102
											PN 93501	PN 93502
											PN 93551	PN 93552
											PN 93601	PN 93602
											PN 96201	PN 96202
											PN 96501	PN 96502



System	Horsepower	Integrated ECU	Timing Control	Boost Compatible	Nitrous Compatible	Laptop Software	Injectors	Built-in Regulator	MAP Sensor	Fan Control	AC Input	E85
30001/2	200-600	Yes	Yes	No	No	No	4	Yes	1-Bar	1	No	Yes

40 **WARNING:** Cancer or Reproductive Harm
www.P65warnings.ca.gov

Emission Controlled Vehicle Information: Not legal for use on Emissions Controlled Vehicles. Check with your local DMV, emissions testing facility or applicable State laws before installing.

FiTech
Fuel Injection



USA 951-340-2624
CANADA 877-521-7787



sales@fitechefi.com



www.fitechefi.com

MASTER KITS Go EFI 4 Power Adder

The Go EFI 4 Power Adder 600hp kit is just the ticket to replace a blow-through carb or looks right at home atop a roots style blower! This system is capable of supporting up to 21.7 psi of boost right out of the box as well as a single stage of wet nitrous. Most of the settings can be controlled through the touch-screen handheld monitor, but this system also comes with Pro-Tuning software to run on a laptop for specific mapping and tuning.



Master Kit PN 96206 includes the Go EFI 600 HP EFI in Bright Aluminum with a 255 LPH In-Tank Regulated Pump Module and Go Spark CDI Ignition.



E85

85

EFI System

Inline Kit, PN 50001

Force Fuel Sump Kit, PN 50004

Force Fuel Mini Sump Kit, PN 50006

In-Tank 255 LPH Kit, PN 50014

In-Tank 340 LPH Kit, PN 50015

In-Tank Regulated 255 LPH Pump, PN 50017

In-Tank Regulated 340 LPH Pump, PN 50018

In-Tank Returnless 340 LPH Pump, PN 50019

Go Spark CD Ignition, PN 91000

Master Kit in Bright Aluminum (PN 30006)

Master Kit in Matte Black (PN 30004)

Go EFI 600 HP Power Adder

✓										PN 31006	PN 31004
	✓									PN 35206	PN 35204
		✓								PN 35506	PN 35504
			✓							PN 36106	PN 36104
				✓						PN 36206	PN 36204
								✓		PN 36306	PN 36304
					✓					PN 36506	PN 36504
						✓				PN 36606	PN 36604
							✓			PN 93006	PN 93004
✓									✓	PN 93106	PN 93104
	✓								✓	PN 93506	PN 93504
		✓							✓	PN 93556	PN 93554
			✓						✓	PN 93606	PN 93604
				✓					✓	PN 96206	PN 96204
					✓				✓	PN 96506	PN 96504

3

YEAR

LIMITED

WARRANTY

FiTech

Fuel Injection



System	Horsepower	Integrated ECU	Timing Control	Boost Compatible	Nitrous Compatible	Laptop Software	Injectors	Built-in Regulator	MAP Sensor	Fan Control	AC Input	E85
30004/6	200-600	Yes	Yes	Yes	Yes	Yes	4	Yes	2.5-Bar	2	Yes	Yes



WARNING: Cancer or Reproductive Harm
www.P65warnings.ca.gov

Emission Controlled Vehicle Information: Not legal for use on Emissions Controlled Vehicles.
Check with your local DMV, emissions testing facility or applicable State laws before installing.

41



USA 951-340-2624
CANADA 877-521-7787



sales@fitechefi.com



www.fitechefi.com

FiTech
Fuel Injection

MASTER KITS Go EFI Classic

If you prefer the restored or classic hot rod look, the Go EFI Classic is for you. The Go EFI Classic features our advanced self-tuning fuel metering technology and will support engines rated up to 650hp. The ECU of the Classic series is compact and easy to mount out of sight to maintain a restored engine compartment but you'll notice the fuel injection benefits every time you turn the key!



Master Kit PN 36120 includes the Go EFI Classic Gold 650 HP TBI with an In-Tank 255 LPH Pump and Go Spark CDI Ignition.

E85

Go EFI Classic 650 HP	EFI System												Master Kit in Classic Gold (PN 30020)		Master Kit in Classic Black (PN 30021)	
	Inline Kit, PN 50001	Force Fuel Sump Kit, PN 50004	Force Fuel Mini Sump Kit, PN 50006	In-Tank 255 LPH Kit, PN 50014	In-Tank 340 LPH Kit, PN 50015	In-Tank Regulated 255 LPH Pump, PN 50017	In-Tank Regulated 340 LPH Pump, PN 50018	In-Tank Returnless 340 LPH Pump, PN 50019	Regulator with Gauge, PN 54001	Go Spark CD Ignition, PN 91000	Master Kit in Classic Gold (PN 30020)	Master Kit in Classic Black (PN 30021)				
	✓									✓	PN 31020	PN 31021				
		✓									PN 35220	PN 35221				
			✓								PN 35520	PN 35521				
				✓						✓	PN 36120	PN 36121				
					✓					✓	PN 36220	PN 36221				
									✓		PN 36320	PN 36321				
						✓					PN 36520	PN 36521				
							✓				PN 36620	PN 36621				
								✓		✓	PN 93020	PN 93021				
	✓								✓	✓	PN 93120	PN 93121				
		✓								✓	PN 93520	PN 93521				
			✓							✓	PN 93557	PN 93558				
				✓					✓	✓	PN 96120	PN 96121				
					✓				✓	✓	PN 96220	PN 96221				
						✓				✓	PN 96320	PN 96321				
							✓			✓	PN 96520	PN 96521				
								✓		✓		PN 96721				



System	Horsepower	Integrated ECU	Timing Control	Boost Compatible	Nitrous Compatible	Laptop Software	Injectors	Built-in Regulator	MAP Sensor	Fan Control	AC Input	E85
30020	200-650	No	No	No	No	No	4	No	1-Bar	1	Yes	Yes
30021	200-650	No	No	No	No	No	4	No	1-Bar	1	Yes	Yes

42 WARNING: Cancer or Reproductive Harm
www.P65warnings.ca.gov

Emission Controlled Vehicle Information: Not legal for use on Emissions Controlled Vehicles. Check with your local DMV, emissions testing facility or applicable State laws before installing.

FiTech
Fuel Injection



USA 951-340-2624
CANADA 877-521-7787



sales@fitechefi.com



www.fitechefi.com

MASTER KITS Meanstreet

The Meanstreet is a nitrous compatible system with eight injectors, an onboard ECU, MAP sensor and internal fuel pressure regulator to deliver a simple, clean installation. With FiTech's proprietary self-tuning technology, combined with easy tuning of steps with the supplied handheld monitor, you'll have your high powered engine tuned and ready for the street or track.



Master Kit PN 36108 includes the Meanstreet 800 HP TBI and the In-Tank 440 LPH Pump Module.

E85

PN 30008 Meanstreet 800 HP Matte Black	EFI System										PN 35208
	Force Fuel Sump Kit, PN 50004	Force Fuel Dual Pump Sump Kit, PN 50005	Force Fuel Dual Pump Sump Kit, PN 50015	In-Tank 340 LPH Pump Module, PN 50016	In-Tank 440 LPH Pump, PN 50018	In-Tank Regulated 340 LPH Pump, PN 50019	In-Tank Returnless 340 LPH Pump, PN 50020	In-Tank Returnless Dual Pump Module, PN 54002	Go Spark CD Ignition, PN 91000	Master Kit PN	
	✓									✓	PN 35208
		✓									PN 35408
			✓								PN 36108
				✓							PN 36208
					✓						PN 36308
						✓					PN 36408
							✓				PN 36608
	✓									✓	PN 93008
		✓								✓	PN 93508
			✓							✓	PN 93548
				✓						✓	PN 93608
					✓					✓	PN 93618
						✓				✓	PN 96208



System	Horsepower	Integrated ECU	Timing Control	Boost Compatible	Nitrous Compatible	Laptop Software	Injectors	Built-in Regulator	MAP Sensor	Fan Control	AC Input	E85
30008	200-800	Yes	No	No	Yes (afr target)	No	8	Yes	1-Bar	1	Yes	Yes

WARNING: Cancer or Reproductive Harm
www.P65warnings.ca.gov

Emission Controlled Vehicle Information: Not legal for use on Emissions Controlled Vehicles. Check with your local DMV, emissions testing facility or applicable State laws before installing.

43



USA 951-340-2624
CANADA 877-521-7787



sales@fitechefi.com



www.fitechefi.com

FiTech
Fuel Injection

MASTER KITS Go EFI 8

If things are getting really serious under your hood in regard to four digit horsepower with boost or nitrous, the Go EFI 8 1200hp Power Adder system is up to the task! This system is made to support serious horsepower and is supplied with our pro-tuning software and features the ability to data-log information! To ensure the best atomization of the fuel injection, the annular discharge design is increased to 20 jet streams to support the fuel volume required under boost. This system features a built-in 2.5 BAR MAP sensor to handle the increased boost pressures and also has built-in timing controls based on boost or a nitrous input.



Master Kit PN 35412 includes Go EFI 8 1200 HP EFI in Matte Black with the Force Fuel Dual Pump Sump Kit.

E85

	EFI System	Force Fuel Dual Pump Sump Kit, PN 50005	In-Tank Returnless Dual Pump Module, PN 50020 and Regulator, PN 54002	Go Spark CD Ignition, PN 90001	Master Kit in Matte Black (PN 30012)	Master Kit in Bright Aluminum (PN 30013)
Go EFI 8 1200 HP	✓	✓	✓	✓	✓	✓
					PN 35412	PN 35413
					PN 36412	PN 36413
					PN 93012	PN 93013
					PN 93542	PN 93543
					PN 96412	PN 96413



System	Horsepower	Integrated ECU	Timing Control	Boost Compatible	Nitrous Compatible	Laptop Software	Injectors	Built-in Regulator	MAP Sensor	Fan Control	AC Input	E85
30012	250-1200	Yes	Yes	Yes	Yes	Yes	8	Yes	2.5 Bar	2	Yes	Yes

44



WARNING: Cancer or Reproductive Harm
www.P65warnings.ca.gov

Emission Controlled Vehicle Information: Not legal for use on Emissions Controlled Vehicles. Check with your local DMV, emissions testing facility or applicable State laws before installing.

FiTech
Fuel Injection



USA 951-340-2624
CANADA 877-521-7787



sales@fitechefi.com



www.fitechefi.com

MASTER KITS Go EFI 2x4 Power Adder

Make a statement with a pair of throttle bodies feeding your 671 or 871 roots blower with this 2x4 Power Adder system. This kit will support up to 1200hp on a naturally aspirated engine. One throttle body houses the ECU while the other secures the Idle Air Control solenoid and four more injectors.



Master Kit PN 36464 includes Go EFI 2x4 1200 HP TBI in Matte Black with the Force Fuel Dual Pump Sump Kit.

E85

	EFI System	Force Fuel Dual Pump Sump Kit, PN 50005	In-tank Returnless Dual Pump Module, PN 50020	Go Spark CD Ignition, PN 90001	Master Kit in Matte Black (PN 30064)	Master Kit in Bright Aluminum (PN 30065)
Go EFI 2x4 1200 HP	✓			PN 35464	PN 35465	
		✓		PN 36464	PN 36465	
			✓	PN 93064	PN 93065	
	✓		✓	PN 93544	PN 93545	
		✓	✓	PN 96764	PN 96765	



System	Horsepower	Integrated ECU	Timing Control	Boost Compatible	Nitrous Compatible	Laptop Software	Injectors	Built-in Regulator	MAP Sensor	Fan Control	AC Input	E85
30064/5	400-1200	Yes	Yes	Yes	Yes	Yes	8	Yes	2.5-Bar	2	Yes	Yes

WARNING: Cancer or Reproductive Harm
www.P65warnings.ca.gov

Emission Controlled Vehicle Information: Not legal for use on Emissions Controlled Vehicles. Check with your local DMV, emissions testing facility or applicable State laws before installing.

45



USA 951-340-2624
CANADA 877-521-7787



sales@fitechefi.com



www.fitechefi.com

FiTech
Fuel Injection

MASTER KIT Go EFI 2x4

Let everyone know you mean business with a pair of 4-barrels crowned atop your engine! The 2x4 is supplied with two throttle bodies, one with the brains and integral ECU, the other with the brawn. Both bodies feature four injectors and will support up to 625 horsepower (naturally aspirated).



Master Kit PN 35262 includes Go EFI 2x4 625 HP in Matte Black with the Force Fuel Sump Kit.

E85

EFI System Inline Kit, PN 50001 Force Fuel Sump Kit, PN 50004 Force Fuel Mini Sump Kit, PN 50006 In-Tank 255 LPH Kit PN 50014 In-Tank 340 LPH Kit, PN 50015 In-Tank Regulated 255 LPH Pump PN 50017 In-Tank Regulated 340 LPH Pump, PN 50018 In-Tank Returnless 340 LPH Pump, PN 50019 Go Spark CD Ignition, PN 91000 Master Kit in Bright Aluminum (PN 30061) Master Kit in Matte Black (PN 30062)											
Go EFI 2x4 625 HP	✓									PN 31061	PN 31062
		✓								PN 35261	PN 35262
			✓							PN 35661	PN 35662
				✓						PN 36161	PN 36162
					✓					PN 36261	PN 36262
								✓		PN 36361	PN 36362
						✓				PN 36561	PN 36562
							✓			PN 36661	PN 36662
								✓		PN 93061	PN 93062
	✓								✓	PN 93161	PN 93162
		✓							✓	PN 93561	PN 93562
					✓				✓	PN 93661	PN 93662
			✓						✓	PN 93721	PN 93762
						✓			✓	PN 96261	PN 96262
				✓					✓	PN 96461	PN 96462
					✓				✓	PN 96561	PN 96562
							✓	✓	✓	PN 96761	PN 96762



System	Horsepower	Integrated ECU	Timing Control	Boost Compatible	Nitrous Compatible	Laptop Software	Injectors	Built-in Regulator	MAP Sensor	Fan Control	AC Input	E85
30061/2	200-625	Yes	Yes	No	No	No	8	Yes	1-Bar	1	No	Yes

46  **WARNING:** Cancer or Reproductive Harm
www.P65warnings.ca.gov

Emission Controlled Vehicle Information: Not legal for use on Emissions Controlled Vehicles.
Check with your local DMV, emissions testing facility or applicable State laws before installing.

FiTech
Fuel Injection



USA 951-340-2624
CANADA 877-521-7787



sales@fitechefi.com



www.fitechefi.com

MASTER KIT Go EFI 3x2



The Go EFI is supplied with three 500 CFM throttle bodies to deliver the looks you want with the performance and driveability you crave. The Go EFI 3x2 system will support up to 600 horsepower and is designed to be a simple, ready-to-run installation.

E85

Master Kit PN 36132 includes the Go EFI 3x2 600 HP Tri-Power EFI with a 255 LPH In-Tank Pump and a Regulator.

EFI System										
Force Fuel Sump Kit, PN 50004										PN 35561
Force Fuel Mini Sump Kit, PN 50006										PN 35610
In-Tank 255 LPH Kit, PN 50014										PN 36132
In-Tank 340 LPH Kit, PN 50015										PN 36133
In-Tank Regulated 255 LPH Pump, PN 50017										PN 36310
In-Tank Regulated 340 LPH Pump, PN 50018										PN 36356
In-Tank Returnless 340 LPH Pump, PN 50019										PN 36537
Regulator with Gauge, PN 54001										PN 93510
Go Spark CD Ignition, PN 91000										PN 93550
Master Kit, 2x2 Classic Gold (PN 39610)										PN 93961
Go EFI 3x2 Tri-Power 600 HP	✓									PN 96532
		✓								PN 96533
			✓							PN 96733
				✓						
					✓					



System	Horsepower	Integrated ECU	Timing Control	Boost Compatible	Nitrous Compatible	Laptop Software	Injectors	Built-in Regulator	MAP Sensor	Fan Control	AC Input	E85
39610	200-600	No	Yes	No	No	No	6	No	1-Bar	1	Yes	Yes

WARNING: Cancer or Reproductive Harm
www.P65warnings.ca.gov

Emission Controlled Vehicle Information: Not legal for use on Emissions Controlled Vehicles. Check with your local DMV, emissions testing facility or applicable State laws before installing.

47

USA 951-340-2624
CANADA 877-521-7787

@
sales@fitechefi.com

www.fitechefi.com

FiTech
Fuel Injection

MASTER KITS Retro-LS TBI

There are many hot rodders out there that want the performance of an LS engine, but prefer the old school looks of a carburetor. FiTech's Retro LS TBI is plated in classic carburetor gold and bolts to an LS intake made for carburetors to deliver all the driveability benefits of a factory EFI system.

For ease of installation, a wiring harness is supplied that is already terminated with the specific LS engine sensors, including the factory knock sensors to complement the built-in timing control. On top of that, the ECU also has the ability to control the transmission shift points and characteristics of the popular 4L60/65/80E transmissions. No laptop is required and the system will work on 24x or 58x crank sensors.



Master Kit PN 36371 includes the Classic Gold Retro LS TBI with a 340 LPH In-Tank Returnless Pump.

E85

	EFI System	Inline Kit, PN 50001	Force Fuel Sump Kit, PN 50004	Force Fuel Mini Sump Kit, PN 50006	In-Tank 255 LPH Kit, PN 50014	In-Tank 340 LPH Kit, PN 50015	In-Tank Regulated 255 LPH Pump, PN 50017	In-Tank Regulated 340 LPH Pump, PN 50018	In-Tank Returnless 340 LPH Pump, PN 50019	Regulator with Gauge, PN 54001	Master Kit in Classic Gold (PN 37001)
Retro LS	✓						✓				PN 31071
650 HP		✓									PN 35271
Classic			✓					✓			PN 35571
Gold				✓				✓			PN 36171
					✓				✓		PN 36271
							✓				PN 36371
						✓					PN 36571
								✓			PN 36671



System	Horsepower	Integrated ECU	Timing Control	Boost Compatible	Nitrous Compatible	Laptop Software	Injectors	Built-in Regulator	MAP Sensor	Fan Control	AC Input	E85
37001	250-650	No	Yes	Yes	No	No	4	No	3-Bar	2	Yes	Yes

48



WARNING: Cancer or Reproductive Harm
www.P65warnings.ca.gov

Emission Controlled Vehicle Information: Not legal for use on Emissions Controlled Vehicles. Check with your local DMV, emissions testing facility or applicable State laws before installing.

FiTech
Fuel Injection



USA 951-340-2624
CANADA 877-521-7787



sales@fitechefi.com



www.fitechefi.com

MASTER KIT Ultra Ram EFI

Our Ultra Ram EFI Systems deliver outstanding port fuel injection performance with an aggressive looking sheet metal intake manifold. The design of the Ultra Ram intake performs as good as it looks and will support up to 600 HP on a small block and up to 800 HP for the big block model (naturally aspirated).

The system comes ready to go out of the box with the injectors and fuel rails installed. The robust ECU is easy to mount and handles the air/fuel mixture targets with self-learning technology so no laptop is required. In fact, you only need to input a few engine specs into the color touch screen monitor to get the engine to fire up. The Ultra Ram is ideal for crate motors or your custom built engine and will deliver great performance with the looks to match.



Master Kit PN 36232 includes the Big Block Chevy Ultra Ram EFI with a 340 LPH In-Tank Pump and Regulator.

E85

EFI System Inline Kit, PN 50001 Force Fuel Sump Kit, PN 50004 Force Fuel Mini Sump Kit, PN 50006 In-Tank 255 LPH Kit, PN 50014 In-Tank 340 LPH Kit, PN 50015 In-Tank 440 LPH Kit, PN 50016 In-Tank Regulated 255 LPH Pump, PN 50017 In-Tank Regulated 340 LPH Pump, PN 50018 In-Tank Returnless 340 LPH Pump, PN 50019 Regulator with Gauge, PN 54001 Go Spark CD Ignition, PN 91000 Master Kit, Small Block (PN 38301) Master Kit, Big Block (PN 38302)													
Ultra Ram EFI System	✓									✓		PN 31301	
		✓										PN 35301	PN 35302
			✓									PN 35531	
				✓						✓		PN 36116	PN 36109
					✓					✓		PN 36131	
										✓		PN 36231	PN 36232
												PN 36331	
						✓						PN 36531	PN 36332
							✓					PN 36631	PN 36632
	✓									✓	✓	PN 93131	
		✓								✓		PN 93531	PN 93532
			✓							✓	✓	PN 93631	PN 93962
				✓						✓	✓	PN 93731	
					✓					✓	✓	PN 93981	
						✓				✓	✓	PN 96231	PN 96232
							✓			✓	✓	PN 96331	PN 96332
								✓		✓	✓	PN 96531	
									✓	✓	✓	PN 96731	PN 96732



System	Horsepower	Integrated ECU	Timing Control	Boost Compatible	Nitrous Compatible	Laptop Software	Injectors	Built-in Regulator	MAP Sensor	Fan Control	AC Input	E85
38301	200-600	No	Yes	Yes	No	Yes	8	No	3-Bar	1	Yes	Yes
38302	200-800	No	Yes	Yes	No	Yes	8	No	3-Bar	1	Yes	Yes

WARNING: Cancer or Reproductive Harm
www.P65warnings.ca.gov

Emission Controlled Vehicle Information: Not legal for use on Emissions Controlled Vehicles. Check with your local DMV, emissions testing facility or applicable State laws before installing.

49



USA 951-340-2624
CANADA 877-521-7787



sales@fitechefi.com



www.fitechefi.com

FiTech
Fuel Injection

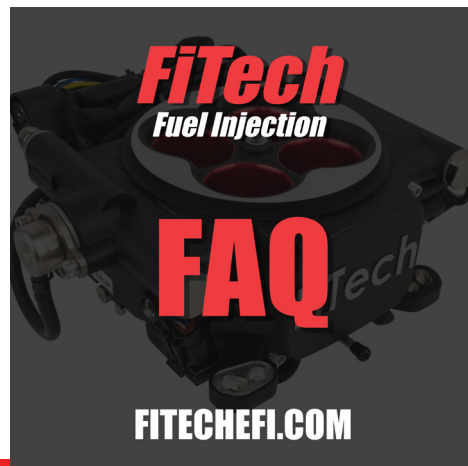


Resources and Support

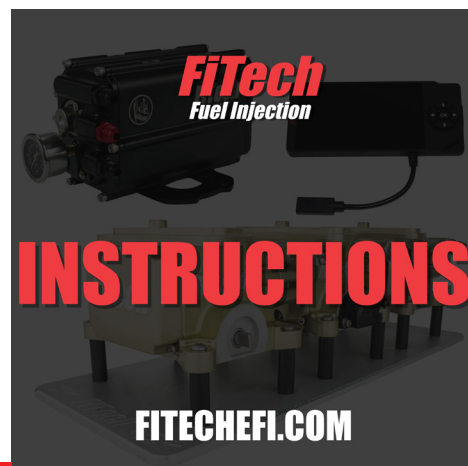
We want to ensure your installation goes well with any of our parts so you can get behind the wheel and enjoy the FiTech performance!



We've gathered a list of Frequently Asked Questions on our website that will likely have the answer to your question. Do I need to use timing control? Can I run a dual plane intake? What fuel pressure is required? All of these and many more are answered on our FAQ.



Our instructions provide thorough details to assist during the installation process. If you need a fresh set of instructions you can easily download them from our website.



We also provide a lot of links to media installations, tips and product information from websites, magazines, social media posts, and other fun posts and cool news.

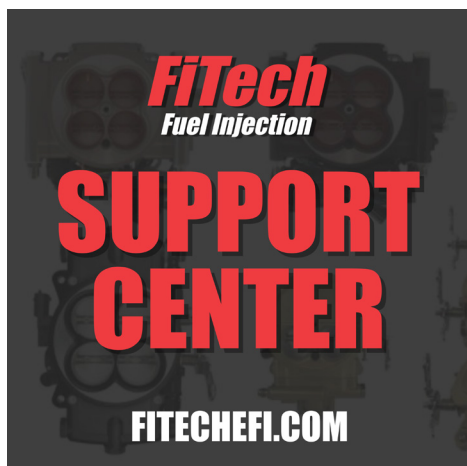


Resources and Support

Not only do we have an experienced team of technicians available by phone or through email, but we also have a lot of helpful resources to help with your installation or setup questions.



The Tech Center page of our website (FiTechEFI.com) is loaded with quick, thorough tech videos that will answer many of the most common questions regarding installation, calibration and tuning. Be sure to take a look!

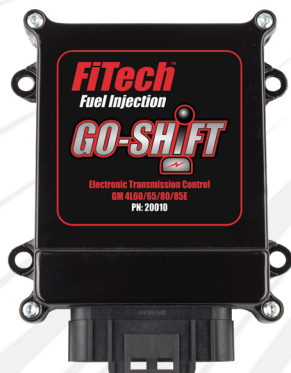
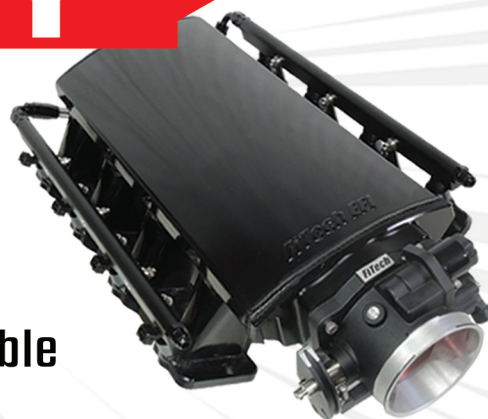
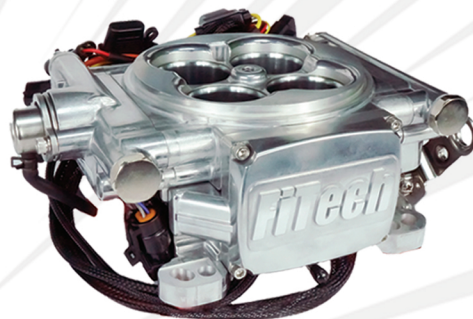
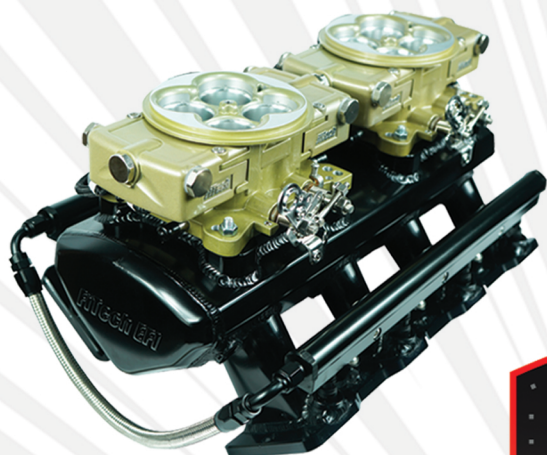


Have questions? We have techs ready to help you over the phone or through email. Please contact us at 951-340-2624 or write to info@fitechefi.com. Our team will get back with you ASAP.



Looking for a dealer or installer to help with your FiTech recommendation or installation? Our website can direct you towards assistance with a quick, effective zip code search.





The most reliable and affordable
EFI system now has the
INDUSTRY LEADING
WARRANTY!

FiTech
Fuel Injection

951-340-2624
sales@fitechefi.com
FiTechEFI.com



Scan for Details!

